

# Massachusetts Butterflies



Spring 2020, No. 54

*Massachusetts Butterflies* is the semiannual publication of the Massachusetts Butterfly Club, a chapter of the North American Butterfly Association. Membership in NABA-MBC brings you *American Butterflies* and *Butterfly Gardener*. If you live in the state of Massachusetts, you also receive *Massachusetts Butterflies*, and our mailings of field trips, meetings, and NABA Counts in Massachusetts. Out-of-state members of NABA-MBC and others who wish to receive *Massachusetts Butterflies* may order it from our secretary for \$7 per issue, including postage. Regular NABA dues are \$35 for an individual, \$45 for a family, and \$70 outside the U.S, Canada, or Mexico. Send a check made out to “NABA” to: NABA, 4 Delaware Road, Morristown, NJ 07960.

## **NABA-MASSACHUSETTS BUTTERFLY CLUB**

### **Officers:**

*President:* Steve Moore, 400 Hudson Street, Northboro, MA, 01532.

(508) 393-9251 [steve@massbutterflies.org](mailto:steve@massbutterflies.org)

*Vice President-East:* Martha Gach, 16 Rockwell Drive, Shrewsbury, MA ,01545.

(508) 981-8833 [martha@massbutterflies.org](mailto:martha@massbutterflies.org)

*Vice President-West:* Bill Callahan, 15 Noel Street, Springfield, MA, 01108

(413) 734-8097 [billc@massbutterflies.org](mailto:billc@massbutterflies.org)

*Treasurer:* Elise Barry, 363 South Gulf Road, Belchertown, MA, 01007.

(413) 461-1205 [elise@massbutterflies.org](mailto:elise@massbutterflies.org)

*Secretary:* Barbara Volkle, 400 Hudson Street, Northboro, MA, 01532.

(508) 393-9251 [barb620@theworld.com](mailto:barb620@theworld.com)

### **Staff**

*Editor, Massachusetts Butterflies:* Bill Benner, 53 Webber Road, West Whately,

MA, 01039. (413) 320-4422 [bill@massbutterflies.org](mailto:bill@massbutterflies.org)

*Records Compiler:* Mark Fairbrother, 129 Meadow Road, Montague, MA,

01351-9512. [mark@massbutterflies.org](mailto:mark@massbutterflies.org)

*Webmaster:* Karl Barry, 363 South Gulf Road, Belchertown, MA, 01007.

(413) 461-1205 [karl@massbutterflies.org](mailto:karl@massbutterflies.org)

**[www.massbutterflies.org](http://www.massbutterflies.org)**

*Massachusetts Butterflies* No. 54, Spring 2020

© Copyright 2020 NABA-Massachusetts Butterfly Club. All rights reserved.



## **2019 Flight of Cloudless Sulphurs in Massachusetts**

**By Brian Cassie**

Late summer and early fall 2019 were witness to an outstanding flight of Cloudless Sulphurs in eastern Massachusetts. The first reported sightings were on August 15, the last on October 5. In this time frame, 187 Cloudless Sulphurs were specifically reported. In addition, butterfly watchers commented generally on “daily” flights and large numbers (a.k.a. “tons”) in parts of Cape Cod, especially in Chatham and vicinity at the elbow of Cape Cod. In the massive fall flight of 1998, Chatham was also the epicenter of Cloudless Sulphur reports. The 2019 reports from the Cape came from Barnstable, Chatham, Dennis, Eastham, East Harwich, Falmouth, Hyanis, Orleans, Provincetown, Sandwich, Yarmouth, Yarmouthport, Wellfleet, West Dennis, and at sea off Chatham (special thanks to Blair Nikula for his pelagic butterfly report).

Martha’s Vineyard Cloudless Sulphurs, reported by Vineyard resident and long-time butterfly watcher Matt Pelikan, were seen in Chilmark, Edgartown, Oak Bluffs, and West Tisbury.

Along the shores of Buzzard’s Bay, from Wareham to Westport, scores of Cloudless Sulphurs were seen, most busily flying eastward in direct flight. A few butterflies were noted nectaring at goldenrods and other flowers.

On September 23, the author observed a female Cloudless Sulphur laying eggs on Partridge Pea foliage, alongside the coastal dirt road at Allen’s Pond Wildlife Sanctuary, in South Dartmouth. The butterfly laid the eggs, perhaps twenty, while under very close observation from 10:50-11:00 a.m. This is apparently the first time Cloudless Sulphur has been reported ovipositing on Partridge Pea in this state.

North of Cape Cod and Buzzard’s Bay, there were records in the coastal town of Plymouth and as far north as Parker River National

Wildlife Refuge, Plum Island, in Essex County. In addition, and significantly, three or four Cloudless Sulphurs were seen at inland sites, a very unusual circumstance for this species in the Bay State. The author saw one or two in Norton on September 1 and another in Attleboro on September 19 - all flying along a wide power line clearing on the Norton-Attleboro line. He also observed a Cloudless Sulphur at Horn Pond Mountain in Woburn, on September 16.

The following persons' Cloudless Sulphur sightings are the basis of this account : Elise Barry, Fred Bouchard, Brian Cassie, Joe Dwelly, Mark Faherty, Mark Kasprzyk, Emily Kellogg, Serge Matheny, Lauren Miller-Donnelly, Michael Newton, Blair Nikula, Matt Pelikan, Scott Richardson, Alison Robb, and Mark Rosenstein. They were shared via personal email with the author or through the Masslep website.



### **Ode to a Butterfly**

Thou spark of life that waviest wings of gold,  
Thou songless wanderer mid the songful birds,  
With Nature's secrets in thy tints unrolled  
Through gorgeous cipher, past the reach of words,  
Yet dear to every child  
In glad pursuit beguiled,  
Living his unspoiled days mid flowers and flocks and herds!

Thou winged blossom, liberated thing,  
What secret tie binds thee to other flowers,  
Still held within the garden's fostering?  
Will they too soar with the completed hours,  
Take flight, and be like thee  
Irrevocably free,  
Hovering at will o'er their parental bowers?

Or is thy lustre drawn from heavenly hues,  
A sumptuous drifting fragment of the sky,  
Caught when the sunset its last glance imbues  
With sudden splendor, and the tree-tops high  
Grasp that swift blazonry,  
Then lend those tints to thee,  
On thee to float a few short hours, and die?

Birds have their nests; they rear their eager young,  
And flit on errands all the livelong day;  
Each fieldmouse keeps the homestead whence it sprung;  
But thou art Nature's freeman,—free to stray Unfettered through  
the wood,  
Seeking thine airy food,  
The sweetness spiced on every blossomed spray.

The garden one wide banquet spreads for thee,  
O daintiest reveller of the joyous earth!  
One drop of honey gives satiety;  
A second draught would drug thee past all mirth.  
Thy feast no orgy shows;  
Thy calm eyes never close,  
Thou soberest sprite to which the sun gives birth.

And yet the soul of man upon thy wings  
Forever soars in aspiration; thou  
His emblem of the new career that springs  
When death's arrest bids all his spirit bow.  
He seeks his hope in thee  
Of immortality.  
Symbol of life, me with such faith endow!

—*Thomas Wentworth Higginson*



## “Snoutbreak” 2019

by Bill Benner

First, a quick recap. Ten years ago, in the Spring 2010 issue of *Massachusetts Butterflies*, I wrote an article entitled “Massachusetts Rarities”. I briefly discussed 19 species of butterflies that were either only rarely or never recorded in Massachusetts prior to that article, based on the butterfly club’s and any other records that were available to me at the time. There have been some interesting changes since then! For example, the first species I discussed in that article was Giant Swallowtail, a species with only a few records up until that time, and one which has since become an uncommon but regular species, at least in some years. For that species, as well as for some of the others that I discussed in the article (e.g. Red-banded Hairstreak, Gray Comma), it remains to be seen whether the recent increases in sightings are transient or instead more permanent population changes.



American Snout  
(*Libytheana carinenta*),  
7/27/19, Sheffield, MA,  
Michael Newton

One species that I discussed was the American Snout, *Libytheana carinenta*. Here’s what I had to say back then:

“This southern immigrant could occasionally breed ephemerally in the state [Hackberry, *Celtis*, is its host plant], but they cannot survive the winter here, and most reports seem to be of stray individuals. There are a few 19th century reports, and 13 more recent records, from October 1972 (Chatham, *Barnstable* county) through October 2008 (Westport, *Bristol*). All, but one, are from

eastern MA; the exception is a report from Hadley (*Hampshire*) on 7/8/2007. The earliest record in this recent series is from June 28, and most records are from the late summer and fall, as would be expected with a southern stray. However, the earliest overall record is the most recent one, an astonishing outlier of a sighting of an individual in Petersham (*Worcester*) on 4/20/2009—a full two months earlier than any other sighting in the state. Connecticut has 20 historical records and recorded it four times during their atlas. Rhode Island also has a handful of recent records, mostly from around Narragansett Bay. This is a butterfly worth looking for in gardens, especially near Hackberry trees along the coast, and perhaps in the Connecticut and Blackstone Valleys, particularly during the latter half of the season.” Since then, we had added 10 more records from September 2009 in Westport and Dartmouth (*Bristol*), through the most recent, July 2015 from Sheffield (*Berkshire*).

American Snout  
(*Libythea carinenta*),  
9/15/19, Boston, MA,  
Lucy Merrill-Hills



Well, 2019 blew this out of the water. There are 32 records in the club’s database for 2019—undoubtedly only a fraction of the actual number of Snouts that made their way to Massachusetts this year. Contrast this with the 23 TOTAL records for all prior modern years, from 1972 through 2018. Clearly, 2019 was an amazing year for American Snouts!

Here is the Hall of Fame for American Snout sightings reported to the club’s database for 2019. Thanks to Michael Newton for the idea for the title of this short note! Thanks to all of you





American Snout  
(*Libythea carinenta*),  
6/12/19, Jamaica Plain,  
MA, Lucy Merrill-Hills

who spend your time in the field and then spend more time sharing your sightings with us. And thanks especially to **Mark Fairbrother**, who compiles all of these data for the club, and provided them with his usual efficiency to make this note possible.

25-May-19 1 SHERBORN BARBER RESERVATION

**Michael Newton**

27-May-19 1 LANCASTER BOLTON FLATS

**Tom Murray**

31-May-19 1 MATTAPOISETT NASKETUCKET BAY  
STATE RESERVE **Michael Newton**

31-May-19 1 HOLYOKE DINOSAUR FOOTPRINTS  
TTOR **Bill Callahan**

08-Jun-19 1 TOPSFIELD IRWS **Michael Newton**

09-Jun-19 1 LYNN **Brian Cassie**

30-Jun-19 1 GEORGETOWN **Matt Arey**

05-Jul-19 1 ZNC SOUTHERN BERKSHIRE

**Rene Wendell et al.**

07-Jul-19 1 CAMBRIDGE **Rosemary Mosco**

12-Jul-19 1 NORTHAMPTON COMMUNITY  
GARDENS **Nancy Callahan**

14-Jul-19 1 SPRINGFIELD **Nancy Callahan**

15-Jul-19 1 BOSTON ARNOLD ARBORETUM

**Lucy Merrill-Hills**

21-Jul-19 1 NEWBURY PLUM ISLAND

**Matt Arey**

21-Jul-19 1 HADLEY (Northampton 4th July Count)  
**Bill Benner/Joe Wicinski**

26-Jul-19 1 SPRINGFIELD **Bill Callahan**

26-Jul-19 1 NEWBURY PLUM ISLAND  
**Devon Griswold**

27-Jul-19 1 SHEFFIELD BARTHOLOMEW'S  
COBBLE T TOR **MBC Trip**

27-Jul-19 1 NEWBURY PLUM ISLAND  
**Devon Griswold**

27-Jul-19 1 SHEFFIELD LIME KILN **MBC Trip**

29-Jul-19 2 BOSTON ARNOLD ARBORETUM  
**Lucy Merrill-Hills**

01-Aug-19 3 SPRINGFIELD FOREST PARK  
**Bill Callahan**

03-Aug-19 1 QUINCY SQUANTUM **Erik Nielsen**

04-Aug-19 1 EGREMONT **Mark Lynch/Sheila Carroll**

04-Aug-19 2 SHEFFIELD BARTHOLOMEW'S  
COBBLE T TOR **Peter DeGennaro**

04-Aug-19 1 NORTHAMPTON COMMUNITY  
GARDENS **Tom Gagnon, Steve Moore, and  
Barbara Volkle**

04-Aug-19 1 SPRINGFIELD FOREST PARK  
**Ron & Sue Cloutier**

05-Aug-19 1 BOSTON ARNOLD ARBORETUM  
**Lucy Merrill-Hills**

12-Aug-19 1 BOSTON ARNOLD ARBORETUM  
**Lucy Merrill-Hills**

12-Aug-19 1 NORTHAMPTON COMMUNITY  
GARDENS **Tom Gagnon**

01-Sep-19 1 NORTHAMPTON COMMUNITY  
GARDENS **MBC Trip**

15-Sep-19 1 BOSTON ARNOLD ARBORETUM  
**Lucy Merrill-Hills**

22-Sep-19 1 LANESBOROUGH MT. GREYLOCK  
**Bill Callahan**



## 2019 Season Summary and Records

### Mark Fairbrother

A chill, wet winter persisted through March, and we were well into April before things really got going. May and most of June were okay, then in early July it once again got very hot and dry. It stayed overly warm and dry until rains and frost arrived in October. The first sighting was on March 20, when a Mourning Cloak was seen in Hardwick, to be joined within a few days by several other sightings across the state. The late record for 2019 was a Question Mark on Nantucket on November 19. Several southern species staged a push into our area through the season. Inland, the hot spots were again the Northampton Community gardens, the Fannie Stebbins refuge in Longmeadow, and Windsor. Closer to the coast, the Newbury area, Boston and Westport/Dartmouth attracted much attention.

Over 8,800 records were received for the 2019 season, a bit more than 2018. These included reports for 106 species. Each year, observers in MA find the same 102 or so species, and in the end it comes down to a handful of southern strays or generally rare species to determine our final total for the year. In 2019 the list was helped by Am. Snout and Hickory and Hessel's Hairstreaks, hurt by Southern Hairstreak and Com. Checkered Skipper.

If you post sightings on-line (MassLep and Facebook) during the season and then send them to me in a group of records post-season, it would be very helpful to indicate which records, if any, were posted earlier and which were not. People submit reports one way or another; either by posting them on the MassLep butterfly list server, sending them directly to me, or posting their sightings on the Facebook page. I'd prefer receiving them in that order, but of course I'll take them anyway I can get them. Unfortunately it's not possible to fit more than a fraction of the total records in the available space. This does not mean that they aren't important; all reported butterflies are logged in the database and help to give a

picture of the health of the various butterfly populations in Massachusetts. In deciding which records to include and keeping in mind the space restrictions we have, I take the earliest report and the latest, the highest number reported, then try to pick records based on location across the state and throughout the season, and finally by observer. I do give small preference to records from new contributors and/or new locations and after that spread credit around generally. After that I refer back to location and time.

## CORRECTIONS

The Spring 2018 report lists 2 Bronze Coppers at the Arnold Arboretum on October 13. That should read 2 American Coppers.

It was Com. Checkered Skippers that were in small numbers at the NCG in fall 2018, not Checkered Whites as I had it in the report.

## SWALLOWTAILS

The main flight of Giant Swallowtail emerged at the end of July and could be encountered almost anywhere well into September. There were only four scattered reports of Pipevine Swallowtail. Eastern Tiger had another banner year, with many reports of numbers being seen from late May well through August, with stragglers into September. Canadian Swallowtail reports continued about average, while Spicebush Swallowtail also had another good year.

## WHITES AND SULPHURS

Cabbage White reports declined to about 700 in 2019, down from over 1,000 in 2018, but I doubt the species is in any trouble. The other whites and sulphurs had average seasons, while Cloudless Sulphur returned to the state in 2019 with 42 records from mid-August on, the large majority of the occurrences being within a few miles of the coast. Little Yellow went unreported.

## GOSSAMER-WINGS

Harvesters popped up here and there across the state, while the two most reported spots continue to be the Mystic Lakes and Long-meadow.

American Copper reports were common and widespread across the season, with two hardy individuals holding on into November, while only two Bog Copper reports were received. Bronze Copper was reported from mostly the expected sites, and well into October. Acadian Hairstreak had only two records, both from Berkshire Co. Coral Hairstreak was reported widely across the state. Woburn and Wilbraham accounted for most of the Edwards Hairstreak reports this year. Eight Striped Hairstreak reports were scattered sparsely across the state. Frosted Elfin feeding on *Baptisia* were relatively widespread in the east, while the lupine feeders continue to be reported from just a couple sites in the CRV. Bog Elfin returned to Worcester County in 2019. Henry's and Hoary Elfin reports and numbers were about average. Red-banded Hairstreak reports continued to decline, with "only" six, mostly from the southeast. There was one report of Hickory Hairstreak, from northern Berkshire Co. White-M Hairstreak records were fewer and confined to the eastern part of the state. Hessel's Hairstreak had one report, and Juniper Hairstreak was again found mostly in Woburn and elsewhere near the coast except for its western stronghold in Holyoke. Gray Hairstreaks were reported widely from mid-April to mid-October. Early Hairstreak was again reported from the high Berkshires. After a very informative, if frustrating, on-line article by Harry Pavulaan, Spring and Summer Azure reports were eclipsed by that new species, Azure sp. There were five reports of Cherry Gall Azure from across the state. Silvery Blue reports were from Worcester County westward to the Berkshires.

## BRUSHFOOTED BUTTERFLIES

Probably the largest excitement of the season was generated by the unprecedented appearance of a number of American Snouts, the

first being found May 25 and the last September 22. Variegated Fritillary was reported from seven locations, mostly in September. Great Spangled Fritillary reports and numbers were down again in 2019, and only seven Aphrodite Fritillary reports were scattered across the northern half of the state. Atlantis Fritillary numbers continue to be low and limited to the Berkshires. Only four reports of Meadow Fritillary were received, all from the Berkshires, while Silver-bordered Fritillary was reported widely across the state. Harris' Checkerspot was limited to three reports from the Worcester area. Baltimore Checkerspot reports were limited and heavily balanced toward the eastern half of the state. In sharp contrast to 2018 when only 15 Question Mark reports came in all season, 2019 began with numbers of migrating individuals in May, and the species remained well reported throughout the period, even giving us our last record for the year in November. Eastern Comma was well and widely reported all season. Eleven reports of Gray Comma were again mostly from the Berkshires, with one from Essex Co. A Green Comma was reported from Mt. Greylock in September. A Compton Tortoiseshell was again reported from Fowl Meadow in Milton in April, the only report of the year. Mourning Cloak was widely reported throughout the season, with perhaps larger number of individuals earlier in the year. There were just a few reports of Milbert's Tortoiseshell in July and August, but then in mid-September the species started popping up all over the western half of the state, with numbers being seen on Mt. Greylock. American Ladies appeared quickly with the arrival of spring weather, first in the east and then everywhere, and then reversed the process in the fall. Most October and November records were from the east. Painted Lady, on the other hand, came in a bit later but was much more widespread across the state, especially in October, although the big numbers of southbound migrants were largely limited to the southeast. Common Buckeye had a banner year, being reported widely and often in numbers just about everywhere in the state east of Berkshire Co., where there were only two reports.

Viceroy appeared widely on June 1st and was widely reported thereafter through September, tailing off during October, while

Hackberry Emperor was reported twice from the Berkshires, and Springfield and Northampton. Tawny Emperor was reported four times from southern Berkshire County and once from Northfield. Northern Pearly-eye was reported mostly during July, from everywhere except the southeast. Eyed Brown reports were also mostly from July, and scattered across the state, while Appalachian Brown reports had a distinctly western flavor. Little Wood-Satyr, which will probably be split into three species, two of which we have in MA, was reported from late May through July into early August across the state. Common Ringlet was out in mid-May through the end of September, and Wood-Nymph reports were about average. Monarchs were just about everywhere all summer long, with expectable large numbers mostly along the coast.

## SKIPPERS

There were eleven Long-tailed Skipper reports in 2019, all but one from the eastern third of the state, with the outlier being found in Easthampton. Seven of the nine Hoary Edge reports were from the Worcester area while the other two were from the CRV. Southern Cloudywings were scattered from the CRV to the Cape, as were Northern Cloudywing reports, with only one west of the CRV. The Duskywings were found when and where one would expect, while Common Sootywing reports were almost all from the CRV, with the exceptions being one from Boston and one from Newbury. The small handful of Arctic Skipper reports were all from the high Berkshires with the exception of one report from Grafton. Least Skipper was well and widely reported from the end of May into mid-October. Fiery Skipper sightings were up this year, with reports from Pittsfield to Newbury, which had good numbers in September. Indian Skipper was reported across the state from normally expected places, with a report from Hawley being of interest. Only five Leonard's Skipper reports came in, with three being from Worcester's Broad Meadow Brook. Cobweb Skipper was reported only four times from a total of three places. Peck's Skipper did well, and Long Dash was reported through June and into July with one presumed 2nd brood report at the end of August. Both broods

of Zabulon Skipper pleased observers in 2019, especially this one when a single Zabulon finally appeared in Montague. Hobomok Skipper reports were up slightly and from the usual areas. Broad-winged Skipper reports were mostly from the eastern half of the state and the lower CRV. Dion Skipper was reported from five locations, while Two-spotted Skipper was reported three times, all in the western half of the state. Six Pepper and Salt Skipper reports were from places as diverse as the Berkshires and Raynham. A dozen or so Sachem reports were mostly from the Dartmouth and Newbury areas. Ocola Skippers turned up in 14 different places from Whately to Yarmouth, starting in mid-August.

**Abbreviations:** ABNC-Athol Bird & Nature Club; AP-Allen's Pond; BFD-Barre Falls Dam; BMB-Broad Meadow Brook; CA-Conservation Area; CG-Community Gardens; CRP-Charles River Peninsula; CRV-Connecticut River Valley; CST-Crane Swamp Trail; DWWS-Daniel Webster Wildlife Sanctuary; EQLT-East Quabbin Land Trust; F&G-Fish & Game; F&W-Fish & Wildlife; FPB-Fort Pond Brook; FS-Fannie Stebbins; GBH-Great Blue Hill; GM-Great Meadows NWR; GITW-Garden in the Woods; HPM-Horn Pond Mountain; IBA-Important Bird Area; IRP-Ipswich River Park; IRWS-Ipswich River Wildlife Sanctuary; LA-Larz Anderson Park; LPWS-Long Pasture Wildlife Sanctuary; MAS-Mass Audubon Sanctuary; MBC-Massachusetts Butterfly Club; MCRT-Massachusetts Central Rail Trail; MBWMA-Martin Burns WMA; MHF-Moose Hill Farm; ML-Mystic Lakes; MMP-Mountain Meadow Preserve; MPRA-Mill Pond Recreational Area; MSSF-Myles Standish State Forest; MV-Martha's Vineyard; NABA 4JC-North American Butterfly Association 4th of July Count; NAC-Nine Acre Corner; NCG-Northampton Community Gardens; NCM-North Common Meadows TTOR; NP-Newburyport; NRT-Norwottuck Rail Trail; NWR-National Wildlife Refuge; PL-Power Line; PRNWR-Parker River NWR; Res.-Reservoir or Reservation; RM-Rumney Marsh; S-C - Stevens-Coolidge TTOR; SF-State Forest; SP-State Park; SR-State Reservation; TTOR-The Trustees of Reservations; WMA-Wildlife Management Area; WMWS-Wachusett Meadow Wildlife Sanctuary; WRR-Waskosim's Rock Reservation; WS=Wildlife Sanctuary



Wendy Miller and Tom Gagnon, 7/27/19,  
Sheffield, MA, Michael Newton



## Pipevine Swallowtail

- 8/23 2 Arnold Arboretum, Boston - Lucy Merrill-Hills  
9/8 1 Stichter Yard, Newbury - Sharon Stichter  
9/20 4 Stichter Yard, Newbury - Sharon Stichter  
9/22 1 Petersham - JoEllen Harris

## Black Swallowtail

- 4/29 1 Signal Hill, Canton - Madeline Champagne  
5/6 1 Ward Res, Andover - Howard Hoople  
5/9 1 Wilbraham Middle School grounds - Bill Callahan  
5/18 7 HPM, Woburn - Michael Newton  
5/25 2 Williamsburg Flower Hill Farm - Carol Duke  
5/26 1 Windsor - Bill & Nancy Callahan  
5/27 1 Shelburne Falls - Jeff Boettner  
5/31 3 Katama, Edgartown - Matt Pelikan  
6/1 1 Sheffield - Bill Benner  
6/8 10 IRWS, Topsfield - Michael Newton  
6/23 1 DWWS, Marshfield - Brian Cassie  
6/28 1 Dubuque SF, Hawley - Mark Lynch, Sheila Carroll  
7/4 7 C Franklin NABA - Mark Fairbrother *et al.*  
7/13 6 Blackstone Valley NABA - Tom Dodd *et al.*  
7/16 1 Breakneck Hill Conservation Land, Southborough - Dawn Vesey  
7/21 22 Northampton NABA - Mark Fairbrother *et al.*  
7/27 57 N Worcester NABA - Wendy Howes *et al.*  
8/4 2 S Egremont, Egremont - Mark Lynch, Sheila Carroll  
8/9 2 MHF, Sharon - Lucy Merrill-Hills  
8/18 3 Florence Community Gardens - Bill & Nancy Callahan  
8/23 2 Salem - Tricia Arrington  
8/31 4 AP, Dartmouth - Lauren Miller-Donnelly *et al.*  
9/4 1 Chicopee - Rachel Bellenoit  
9/8 2 FS WMA, Longmeadow - Bill & Nancy Callahan  
9/14 12 AP, Dartmouth - Matt Arey  
9/28 7 Appleton Farms, Ipswich - MBC Trip  
10/2 1 Chicopee - Wioletta Rarog  
10/21 1 Nahant - Linda Pivacek

## Giant Swallowtail

- 5/30 1 Shrewsbury - Bruce deGraaf  
6/2 1 Bart's Cobble, Sheffield - Bill & Nancy Callahan  
7/5 1 S Berkshire NABA - Rene Wendell *et al.*  
7/13 1 Arnold Arboretum, Boston - Lucy Merrill-Hills

- 7/27 4 Bart's Cobble, Sheffield - MBC Trip  
8/4 15 Bart's Cobble, Sheffield - Peter DeGennaro  
8/4 1 Arnold Arboretum, Boston - Bob Mayer  
8/4 31 S Egremont, Egremont - Mark Lynch, Sheila Carroll  
8/14 1 Arlington Heights - Peter Loshin  
8/15 1 New Salem - Wendy Howes  
8/16 1 Williamstown - Pam Weatherbee  
8/16 1 West Whately - Bill Benner  
8/17 1 Hadley - Janith Taylor  
8/18 1 Cummington - Henry Chinaski  
8/20 1 Hardwick - Wendy Howes  
8/22 3 Northampton CG - Tom Gagnon  
8/24 1 Chicopee - Wioletta Rarog  
8/24 1 Long Point, W Tisbury - Matt Pelikan  
8/24 1 Holliston - Jane Pierce  
8/25 7 Northampton CG - Tom Gagnon  
8/27 2 Williamstown - Pam Weatherbee  
8/29 1 Springfield - Bill & Nancy Callahan  
8/29 1 S Hadley - Josh Rose  
8/30 1 Medford - Nino Susi  
8/31 1 Natick - Glenn Long  
9/1 1 Yarmouth - Joe Dwelly  
9/5 3 Arnold Arboretum, Boston - Lucy Merrill-Hills  
9/5 4 Northampton CG - Garry Kessler  
9/13 1 Sylvan Nursery, Dartmouth - Lauren Miller-Donnelly  
9/17 1 Northampton CG - Tom Gagnon  
9/20 1 Belchertown - Elise Barry  
9/21 1 Westport - Dan Farnsworth  
9/24 1 Plum Island, Newbury - Matt Arey

## Tiger Swallowtail (spp)

- 5/23 1 Chelmsford - Tom Murray  
5/25 1 Williamsburg Flower Hill Farm - Carol Duke  
5/27 4 Colrain - Dave Small  
6/1 15 Rutland - Dolores Price, Marvin St. Onge  
7/28 4 Elm Hill, MAS, Brookfield - Wendy Howes, Alan Rawle

## Eastern Tiger Swallowtail

- 5/7 1 MSSF, Plymouth - Michael Newton  
5/18 1 Montague Plains - Bill & Nancy Callahan  
5/20 2 Plum Island, Newbury - Matt Arey  
5/25 5 Paxton - Wendy Howes, Alan Rawle  
5/31 1 Crane WMA, Falmouth - Joe Dwelly  
6/1 17 Rowe - Mark Lynch, Sheila Carroll  
6/2 1 Lime Kiln, Sheffield - Bill & Nancy Callahan  
6/7 2 Arnold Arboretum, Boston - Lucy Merrill-Hills  
6/8 102 Hinsdale - Mark Lynch, Sheila Carroll  
6/9 12 Bernardston - Mark Fairbrother

6/15 46 Warwick - Mark Lynch, Sheila Carroll  
 6/22 3 Great Barrington - Bill & Nancy Callahan  
 6/28 31 Hawley - Mark Lynch, Sheila Carroll  
 7/4 55 C Franklin NABA - Mark Fairbrother *et al.*  
 7/5 33 S Berkshire NABA - Rene Wendell *et al.*  
 7/7 97 N Berkshire NABA - Tom Tynning *et al.*  
 7/13 40 C Berkshire NABA - Tom Tynning *et al.*  
 7/16 14 Windsor - Bill Callahan  
 7/19 77 Monroe - Mark Lynch, Sheila Carroll  
 7/20 18 October Mountain SF, Washington - Bill & Nancy Callahan  
 7/21 22 Northampton NABA - Mark Fairbrother *et al.*  
 7/25 11 High Ridge WMA, Westminster - Wendy Howes  
 7/27 71 N Worcester NABA - Wendy Howes *et al.*  
 7/29 25 Windsor - Bill Callahan  
 8/1 1 W Newbury - Bo Zarembo  
 8/3 6 FS WMA, Longmeadow - Bill & Nancy Callahan  
 8/4 2 Dunstable - Tom Murray  
 8/8 3 BMB WS, Worcester - Steve Moore  
 8/11 4 Huntington - Mark Lynch, Sheila Carroll  
 8/24 4 Sandisfield - Mark Lynch, Sheila Carroll  
 8/31 1 Arnold Arboretum, Boston - MBC Trip  
 9/5 1 Williamstown - Bo Zarembo  
 9/8 1 East Wareham - Laura Sayward  
 9/20 1 Fall River - Doug Hlousek  
 9/29 1 Newbury, Tendercrop Farm - Matt Arey  
 10/5 1 West Whately - Bill Benner

### **Canadian Tiger Swallowtail**

5/7 2 Hadley - Tom Gagnon  
 5/25 11 Otter River SF, Winchendon - Mark Lynch, Sheila Carroll  
 5/26 7 Huntington - Mark Lynch, Sheila Carroll  
 5/26 2 Mt. Greylock SR, Lanesborough - Bill & Nancy Callahan  
 5/26 1 Groton - Tom Murray  
 5/27 7 Ware River Watershed, Barre - Mark Lynch, Sheila Carroll  
 5/27 5 Plainfield - Bill Benner  
 5/31 2 Petersham - Mark Lynch, Sheila Carroll  
 6/1 6 Lanesborough - MBC Trip  
 7/7 41 Worthington - Mark Lynch, Sheila Carroll  
 7/7 42 N Berkshire NABA - Tom Tynning *et al.*  
 9/20 2 Huntington - Mark Lynch, Sheila Carroll

### **Spicebush Swallowtail**

5/20 10 Plum Island, Newbury - Matt Arey  
 5/20 1 FS WMA, Longmeadow - Bill Callahan  
 5/25 1 S Deerfield, Deerfield - Mark Fairbrother  
 5/31 2 Nasketucket Bay Reserve, Mattapoisett - Michael Newton  
 6/12 2 Fall River - Doug Hlousek  
 6/27 1 Muddy Brook WMA, Hardwick - MBC Trip  
 7/4 4 C Franklin NABA - Mark Fairbrother *et al.*  
 7/13 4 Blackstone Valley NABA - Tom Dodd *et al.*  
 7/20 10 Rough Meadows WS, Rowley - Matt Arey  
 8/4 4 Dunstable - Tom Murray  
 8/8 1 MBWMA, Newbury - Bo Zarembo  
 8/17 10 Nasketucket Bay Reserve, Mattapoisett - MBC Trip  
 8/26 1 Nasketucket Bay Reserve, Mattapoisett - Mark Rosenstein  
 8/30 2 Groton - Tom Murray  
 9/20 1 Huntington - Mark Lynch, Sheila Carroll  
 9/29 1 West Whately - Bill Benner, Joe Wicinski.

### **Mustard White**

5/6 2 Berkshire County - Tom Gagnon  
 5/20 8 Windsor - Bill Callahan  
 6/1 3 Moran WMA, Windsor - MBC Trip  
 6/8 3 Windsor - Bill & Nancy Callahan  
 6/25 2 Berkshire County - Gael Hurley  
 7/7 1 Windsor - Bill & Nancy Callahan  
 7/12 3 Windsor - Bill Callahan  
 7/13 61 C Berkshire NABA - Tom Tynning *et al.*  
 7/19 1 SF, Savoy - Bill Callahan  
 7/20 13 Lenox - Peter DeGennaro  
 7/29 9 Windsor - Bill Callahan  
 8/2 4 Windsor - Bill Callahan

### **West Virginia White**

5/10 1 Berkshire County - Mary Wright Julius  
 5/18 2 Sunderland - Bill & Nancy Callahan  
 5/18 6 Williamstown - Bo Zarembo  
 5/26 1 West Whately - Bill Benner  
 5/26 1 Holyoke - Bill Benner  
 5/26 2 Mt. Greylock SR, Lanesborough - Bill & Nancy Callahan  
 5/27 1 Plainfield - Bill Benner  
 6/1 1 Rowe - Mark Lynch, Sheila Carroll  
 6/1 3 Lanesborough - MBC Trip  
 6/1 6 North Adams, Mt. Greylock State Res. - MBC Trip  
 6/8 1 Hinsdale - Mark Lynch, Sheila Carroll

## Cabbage White

3/31 1 Adams Farm, W. Bridgewater - Don Adams  
4/4 1 Oak Bluffs - Matt Pelikan  
4/7 1 Springfield - Nancy Callahan  
4/24 3 Fall River - Doug Hlousek  
5/7 6 Holliston - Richard Hildreth  
5/19 5 Delaney WMA, Stow - MBC Trip  
5/25 10 Sherborn - Michael Newton  
5/27 9 Millenium Park, Roxbury - Lucy Merrill-Hills  
5/31 2 West Whately - Bill Benner  
6/2 1 Lime Kiln, Sheffield - Bill & Nancy Callahan  
6/9 6 Cherry Hill Reservoir, Newbury - Lucy Merrill-Hills  
6/22 4 Great Barrington - Bill & Nancy Callahan  
6/24 10 Arnold Arboretum, Boston - Lucy Merrill-Hills  
6/28 7 Borden Colony, Raynham - Joe Dwelly  
6/30 5 MBWMA, Newbury - Matt Arey  
7/4 191 C Franklin NABA - Mark Fairbrother *et al.*  
7/5 20 S Berkshire NABA - Rene Wendell *et al.*  
7/7 94 N Berkshire NABA - Tom Tynning *et al.*  
7/13 11 Blackstone Valley NABA - Tom Dodd *et al.*  
7/13 23 C Berkshire NABA - Tom Tynning *et al.*  
7/21 1326 Northampton NABA - Mark Fairbrother *et al.*  
7/27 49 Brewster NABA - Joe Dwelly *et al.*  
7/27 66 N Worcester NABA - Wendy Howes *et al.*  
8/2 27 Boston Nature Center - Lucy Merrill-Hills  
8/3 20 Squantum, Quincy - Erik Nielsen  
8/4 10 Dunstable - Tom Murray  
8/4 19 S Egremont, Egremont - Mark Lynch, Sheila Carroll  
8/7 1 Eastham - Sherri VandenAkker  
8/9 26 Westport - Mark Lynch, Sheila Carroll  
8/12 22 Arnold Arboretum, Boston - Lucy Merrill-Hills  
8/17 30 Northampton CG - Tom Gagnon *et al.*  
8/18 40 Florence Community Gardens - Bill & Nancy Callahan  
8/20 7 DWWS, Marshfield - Fred Bouchard  
8/20 11 Holliston - Richard Hildreth  
8/24 40 Northampton CG - Michael Newton  
8/26 55 Rock Meadow, Belmont - Fred Bouchard

8/27 70 Northampton CG - Steve Moore, Barbara Volkle  
8/30 30 Westport - Mark Lynch, Sheila Carroll  
9/1 50 Northampton CG - MBC Trip  
9/3 41 Boston Nature Center - Lucy Merrill-Hills  
9/5 10 Williamstown - Bo Zarembo  
9/8 60 Fitch's Bridge Road, Groton - Tom Murray  
9/9 50 Northampton CG - Bill & Nancy Callahan  
9/15 25 Fitch's Bridge Road, Groton - Tom Murray  
9/21 13 Arnold Arboretum, Boston - Lucy Merrill-Hills  
9/22 75 Mill Village Road, Deerfield - Mark Fairbrother  
9/22 50 Fitch's Bridge Road, Groton - Tom Murray  
9/28 20 Fitch's Bridge Road, Groton - Tom Murray  
10/1 1 Adams - Jeanne Boudreau  
10/7 15 Helfand Community Gardens, Dartmouth - Lauren Miller-Donnelly  
10/13 25 Northampton CG - Bill & Nancy Callahan  
10/16 2 Leyden Road, Greenfield - Mark Fairbrother  
10/24 2 Nahant Thicket - Linda Pivacek  
11/1 1 West Whately - Bill Benner  
11/1 2 Arnold Arboretum, Boston - Lucy Merrill-Hills

## Clouded Sulphur

4/21 1 Springfield - Bill Callahan  
5/7 1 Cohasset - Michael Newton  
5/11 5 Chelmsford PL - Tom Murray  
5/18 10 Borden Colony, Raynham - Joe Dwelly  
5/19 1 Oakham - Karl & Elise Barry  
5/22 3 McDonald Nature Preserve, Wilbraham - Bill Callahan  
5/25 10 Sherborn - Michael Newton  
5/26 1 Huntington - Mark Lynch, Sheila Carroll  
5/26 1 West Whately - Bill Benner  
5/27 1 Plainfield - Mark Fairbrother  
6/1 1 Sheffield - Bill Benner  
6/2 8 Hennessey Property, Grafton - Dolores Price, Marvin St. Onge  
6/15 1 NCM, Petersham - Bill & Nancy Callahan  
7/4 32 C Franklin NABA - Mark Fairbrother *et al.*  
7/5 14 S Berkshire NABA - Rene Wendell *et al.*

7/7 14 N Berkshire NABA - Tom Tynning  
*et al.*  
7/13 12 C Berkshire NABA - Tom Tynning  
*et al.*  
7/13 30 Blackstone Valley NABA - Tom Dodd  
*et al.*  
7/16 2 Moran WMA, Windsor - Bill Callahan  
7/21 74 Northampton NABA - Mark  
Fairbrother *et al.*  
7/27 39 N Worcester NABA - Wendy Howes  
*et al.*  
8/1 11 Ware River Watershed, Barre - Mark  
Lynch, Sheila Carroll  
8/4 3 S Egremont, Egremont - Mark Lynch,  
Sheila Carroll  
8/9 9 MHF, Sharon - Lucy Merrill-Hills  
8/18 16 Conte NWR, Hadley - Karl & Elise  
Barry  
8/20 11 DWWS, Marshfield - Fred Bouchard  
8/24 13 Sandisfield - Mark Lynch, Sheila  
Carroll  
8/24 20 Northampton CG - Michael Newton  
8/30 46 Westport - Mark Lynch, Sheila Carroll  
9/1 15 Worcester Airport - Mark Lynch, Sheila  
Carroll  
9/5 10 Williamstown - Bo Zaremba  
9/8 250 AP Allens Neck, Dartmouth - MBC  
Trip  
9/13 20 Groton - Tom Murray  
9/15 20 Appleton Farms, Ipswich - MBC Trip  
9/19 75 AP Field Station, Dartmouth - Steve  
Moore *et al.*  
9/21 25 Quinapauxet Res., Holden - Mark  
Lynch, Sheila Carroll  
9/22 18 Windsor - Bill Callahan  
9/25 40 Groton, Wallace Road - Tom Murray  
9/28 81 Appleton Farms, Ipswich - MBC Trip  
10/1 6 Andover, Lightning Tree Reservation -  
Howard Hoople  
10/5 35 Groton - Tom Murray  
10/13 10 Andover, Lightning Tree Reservation  
- Howard Hoople  
10/14 20 WMWMA, New Braintree - Wendy  
Howes, Alan Rawle  
10/14 1 Monroe - Mark Fairbrother  
10/21 1 Hardwick - Wendy Howes  
10/23 2 Amherst - Sarah Lambdin  
11/2 12 Fairhaven - Mark Lynch, Sheila  
Carroll  
11/4 1 Leyden Road, Greenfield - Mark  
Fairbrother  
11/6 1 Arnold Arboretum, Boston - Lucy  
Merrill-Hills

### **Orange Sulphur**

5/25 3 Sherborn - Michael Newton  
7/7 9 N Berkshire NABA - Tom Tynning *et al.*

7/13 6 Blackstone Valley NABA - Tom Dodd  
*et al.*  
7/20 11 Falmouth NABA - Joe Dwelly *et al.*  
7/21 18 Northampton NABA - Mark  
Fairbrother *et al.*  
7/27 12 Brewster NABA - Joe Dwelly *et al.*  
8/1 6 Bennett Meadow, Northfield - Bill  
Callahan  
8/3 6 Crane WMA, Falmouth - Joe Dwelly  
8/20 50 Allens Pond Wildlife Sanctuary,  
Dartmouth - Steve Moore, Garry Kessler  
8/23 2 Windsor - Bill Callahan  
8/25 1 Moose Brook Preserve, Hardwick -  
Wendy Howes, Alan Rawle  
8/26 10 Nasketucket Bay Reserve,  
Mattapoisett - Mark Rosenstein  
8/29 21 Bachelor Brook/Stony Brook CA -  
Bill & Nancy Callahan  
9/1 13 Ipswich - Garry & Annie Kessler,  
Howard Hoople  
9/8 20 AP Field Station, Dartmouth - MBC  
Trip  
9/8 95 AP Allens Neck, Dartmouth - MBC  
Trip  
9/15 20 Appleton Farms, Ipswich - MBC Trip  
9/19 100 AP Field Station, Dartmouth - Steve  
Moore *et al.*  
9/22 15 Northampton CG - MBC Trip  
9/26 2 New Braintree - Wendy Howes  
9/27 2 Sandisfield - Mark Lynch, Sheila  
Carroll  
10/5 11 Crane WMA, Falmouth - Joe Dwelly  
10/6 12 Newbury, Tendercrop Farm - Matt  
Arey  
10/14 2 Foxborough - Madeline Champagne  
10/16 1 Leyden Road, Greenfield - Mark  
Fairbrother  
10/23 1 Amherst - John Lambdin  
11/1 1 Arnold Arboretum, Boston - Lucy  
Merrill-Hills  
11/2 3 Deer Island, Winthrop - Fred Bouchard

### **Cloudless Sulphur**

8/15 1 Sylvan Nursery, Dartmouth - Tom  
Murray  
8/20 1 Rowley - Matt Arey  
8/24 5 Long Point, W Tisbury - Matt Pelikan  
9/8 10 AP Allens Neck, Dartmouth - MBC  
Trip  
9/13 1 Ellisville Harbor SP, Plymouth - Serge  
Matheny  
9/15 2 Adams Farm, W. Bridgewater - Don  
Adams  
9/15 12 Chatham - Mark Faherty  
9/17 11 Westport - Brian Cassie  
9/21 2 Orleans - Joe Dwelly  
9/21 4 Plum Island, Newbury - Matt Arey

9/24 3 Plum Island, Newbury - Matt Arey  
9/24 1 Fairhaven - Joe Dwelly  
9/28 6 Sylvan Nursery, Dartmouth - Michael  
Newton  
10/6 1 Newbury, Tendercrop Farm - Matt Arey

### **Harvester**

5/11 1 FS WMA, Longmeadow - Steve  
Shelasky  
6/8 1 Windsor - Bill & Nancy Callahan  
6/8 3 IRWS, Topsfield - Michael Newton  
6/15 1 BMB WS, Worcester - Michael Newton  
6/23 1 Noanet Woodlands Res., Dover - Erik  
Nielsen  
6/30 1 MBWMA, Newbury - Matt Arey  
7/25 5 Mystic Lakes, Medford - Renee  
LaFontaine  
8/3 2 FS WMA, Longmeadow - Bill & Nancy  
Callahan  
8/17 4 FS WMA, Longmeadow - MBC Trip  
8/21 3 FS WMA, Longmeadow - Bill Callahan  
9/15 1 Stoneham - Rosemary Mosco  
9/17 1 FS WMA, Longmeadow - Bill Callahan  
9/19 5 Cambridge - Dawn Dentzer

### **American Copper**

5/6 1 Barnes Airport, Westfield - Bill Callahan  
5/8 1 Wareham - Andrew Griffith  
5/16 1 Ward Res, Andover - Howard Hoople  
5/18 12 Borden Colony, Raynham - Joe  
Dwelly  
5/24 8 Arnold Arboretum, Boston - Lucy  
Merrill-Hills  
5/26 14 Chelmsford - Tom Murray  
5/31 1 Katama, Edgartown - Matt Pelikan  
6/1 10 HPM, Woburn - Matt Arey  
6/8 1 Windsor - Bill & Nancy Callahan  
7/4 28 C Franklin NABA - Mark Fairbrother  
*et al.*  
7/13 11 Blackstone Valley NABA - Tom Dodd  
*et al.*  
7/21 18 Northampton NABA - Mark  
Fairbrother *et al.*  
7/27 48 Brewster NABA - Joe Dwelly *et al.*  
7/27 15 N Worcester NABA - Wendy Howes  
*et al.*  
8/20 30 Plum Island, Newbury - Matt Arey  
8/27 15 Oak St. PL, Shrewsbury - Bruce  
deGraaf  
8/31 20 Arnold Arboretum, Boston - MBC Trip  
9/5 11 Arnold Arboretum, Boston - Lucy  
Merrill-Hills  
9/8 15 Petersham - Mark Lynch, Sheila Carroll  
9/9 2 Northampton CG - Bill & Nancy  
Callahan  
9/15 15 Oak St. PL, Shrewsbury - Bruce  
deGraaf  
9/21 10 Plum Island, Newbury - Matt Arey

9/21 4 Quinapauxet Res, Holden - Mark  
Lynch, Sheila Carroll  
9/28 7 New Salem - Karl & Elise Barry  
10/8 3 Concord - Fred Bouchard  
10/13 11 Arnold Arboretum, Boston - Lucy  
Merrill-Hills  
10/16 2 S Hadley - Wendy Howes  
10/24 2 Andover, Lightning Tree Reservation -  
Howard Hoople  
11/2 2 Arnold Arboretum, Boston - Lucy  
Merrill-Hills

### **Bronze Copper**

6/12 2 FS WMA, Longmeadow - Bill Callahan  
6/24 2 FS WMA, Longmeadow - Bill Callahan  
7/7 1 N Berkshire NABA - Tom Tynning *et al.*  
8/14 1 GMNWR, Concord - Leslie Kramer  
8/20 2 Plum Island, Newbury - Matt Arey  
8/29 1 Wayland - Garry Kessler  
9/1 2 Ipswich - Kessler, Kessler & Hoople  
9/8 4 FS WMA, Longmeadow - Bill & Nancy  
Callahan  
9/14 1 AP, Dartmouth - Matt Arey  
9/16 3 GMNWR, Concord - Greg Dysart  
9/21 12 FS WMA, Longmeadow - Bill  
Callahan  
9/27 6 Concord - Garry Kessler  
9/27 9 FS WMA, Longmeadow - Bill Callahan  
9/28 7 GMNWR, Concord - Greg Dysart  
9/28 6 Groton, Wallace Road - Tom Murray  
9/29 1 Ipswich - Ellen Welch Granter  
10/5 5 Groton - Tom Murray  
10/5 7 FS WMA, Longmeadow - Bill & Nancy  
Callahan  
10/6 1 Appleton Farms, Ipswich - Matt Arey  
10/19 1 Medfield - Erik Nielsen  
10/20 3 Wayland - Tom Whelan

### **Bog Copper**

7/4 838 C Franklin NABA - Mark Fairbrother  
*et al.*  
7/6 10 Wendell - Mark Lynch, Sheila Carroll

### **Coral Hairstreak**

7/11 1 Hatches Harbor, Provincetown - Tor  
Hansen  
7/4 3 HPM, Woburn - Dawn Vesey  
7/4 1 Berkshire County - Gael Hurley  
7/4 5 C Franklin NABA - Mark Fairbrother  
*et al.*  
7/7 6 N Berkshire NABA - Tom Tynning *et al.*  
7/10 15 Crowe's, Dennis - Joe Dwelly  
7/13 28 C Berkshire NABA - Tom Tynning  
*et al.*  
7/13 4 Blackstone Valley NABA - Tom Dodd  
*et al.*  
7/14 1 Wareham - Andrew Griffith

7/14 2 McDonald Nature Preserve, Wilbraham  
- Bill & Cara Callahan  
7/15 1 Ware - Ron & Sue Cloutier  
7/15 1 HPM, Woburn - Mark Rosenstein  
7/20 3 Falmouth NABA - Joe Dwelly *et al.*  
7/27 22 Brewster NABA - Joe Dwelly *et al.*  
8/1 1 Oak St. PL, Shrewsbury - Bruce deGraaf

### **Acadian Hairstreak**

7/4 1 Berkshire County - Gael Hurley  
7/13 3 C Berkshire NABA - Tom Tynning *et al.*

### **Edwards' Hairstreak**

6/26 1 HPM, Woburn - Steve Moore  
6/29 2 HPM, Woburn - Garry Kessler  
7/1 3 McDonald Nature Preserve, Wilbraham  
- Bill Callahan  
7/4 2 HPM, Woburn - Dawn Vesey  
7/6 11 McDonald Nature Preserve, Wilbraham  
- Bill Callahan  
7/7 3 HPM, Woburn - Howard Hoople  
7/9 13 HPM, Woburn - Bo Zaremba  
7/14 12 McDonald Nature Preserve,  
Wilbraham - Bill & Cara Callahan  
7/15 1 Ware - Ron & Sue Cloutier  
7/15 6 HPM, Woburn - Mark Rosenstein  
7/20 8 Falmouth NABA - Joe Dwelly *et al.*  
7/26 1 HPM, Woburn - Mark Rosenstein

### **Banded Hairstreak**

6/27 3 Carlisle Ave., Montague - Mark  
Fairbrother  
6/30 1 MBWMA, Newbury - Matt Arey  
7/4 27 C Franklin NABA - Mark Fairbrother  
*et al.*  
7/5 8 S Berkshire NABA - Rene Wendell  
*et al.*  
7/7 10 Shrewsbury - Bruce deGraaf  
7/7 6 N Berkshire NABA - Tom Tynning *et al.*  
7/13 6 C Berkshire NABA - Tom Tynning *et al.*  
7/20 1 Falmouth NABA - Joe Dwelly *et al.*  
7/21 6 Northampton NABA - Mark Fairbrother  
*et al.*  
7/27 2 Bart's Cobble, Sheffield - MBC Trip  
8/2 1 West Whately - Bill Benner

### **Hickory Hairstreak**

7/7 3 N Berkshire NABA - Tom Tynning *et al.*

### **Striped Hairstreak**

7/4 2 C Franklin NABA - Mark Fairbrother  
*et al.*  
7/14 1 McDonald Nature Preserve, Wilbraham  
- Bill & Cara Callahan  
7/20 1 Berkshire County - Peter DeGennaro  
7/20 2 Rough Meadows WS, Rowley - Matt  
Arey  
7/22 1 Malden - Kirk Marshall

*et al.*

8/4 1 Dunstable - Tom Murray  
8/20 1 Plum Island, Newbury - Matt Arey

### **Brown Elfin**

4/25 10 HPM, Woburn - Howard Hoople  
4/29 1 Upton State Forest - Tom Dodd  
5/4 6 MSSF, Plymouth - MBC Trip  
5/4 2 Montague Plains - Bill & Nancy  
Callahan  
5/6 4 Correllus State Forest, West Tisbury -  
Matt Pelikan  
5/7 16 MSSF, Plymouth - Michael Newton  
5/16 15 MSSF, Plymouth - Steve Moore  
5/18 21 Montague Plains - Bill & Nancy  
Callahan  
5/22 2 HPM, Woburn - Mark Rosenstein  
5/25 1 Otter River SF, Winchendon - Mark  
Lynch, Sheila Carroll  
5/31 3 MSSF, Plymouth - Michael Newton

### **Hoary Elfin**

4/14 2 W Tisbury - Matt Pelikan  
5/6 3 Correllus State Forest, West Tisbury -  
Matt Pelikan  
5/7 4 Thompson Fields, Harwich - Joe Dwelly  
5/7 4 MSSF, Plymouth - Michael Newton  
5/16 1 MSSF, Plymouth - Steve Moore

### **Frosted Elfin**

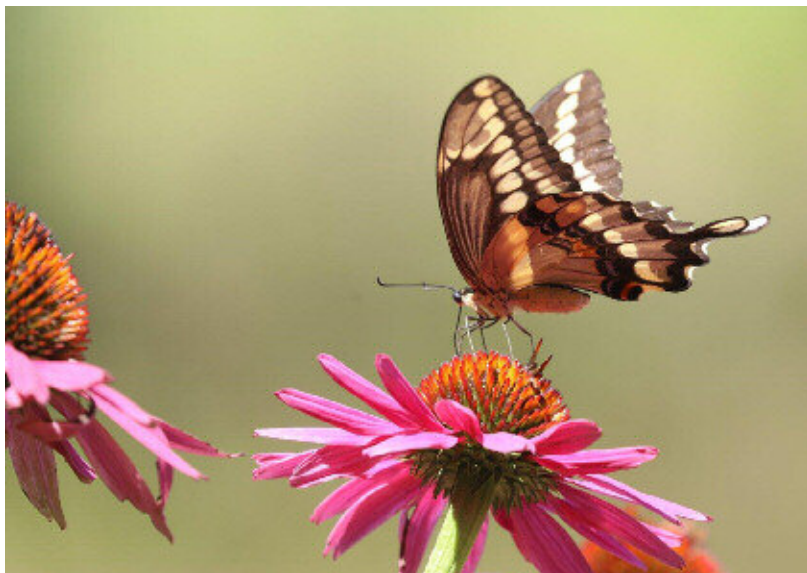
4/25 24 Westfield - Tom Gagnon  
5/8 1 Crane WMA, Falmouth - Joe Dwelly  
5/16 2 Lamson Rd, Foxborough - Madeline  
Champagne  
5/18 50 Florence - Tom Gagnon  
5/18 23 Palmer - Brian Klassanos  
5/20 24 Florence - Bill Callahan  
5/22 2 MSSF, Plymouth - Garry Kessler  
5/25 1 Chelmsford PL - Tom Murray  
5/27 11 Lamson Rd, Foxborough - Brian  
Cassie  
5/31 16 MSSF, Plymouth - Michael Newton  
5/31 1 Katama, Edgartown - Matt Pelikan  
6/1 6 Lamson Rd, Foxborough - Madeline  
Champagne  
6/9 2 Lamson Rd, Foxborough - Madeline  
Champagne

### **Henry's Elfin**

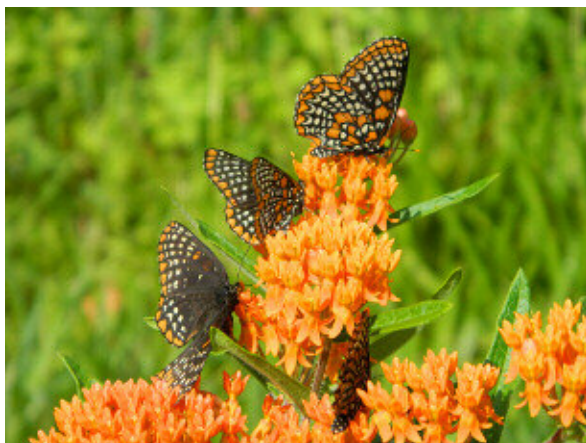
4/17 2 Fowl Meadows, Milton - Lucy  
Merrill-Hills  
4/19 1 Burma Road, Milton - Lucy  
Merrill-Hills  
4/21 1 W Roxbury - Stephen Baird  
4/24 20 Natick - Michael Newton  
4/24 1 Fountain Park, Wilbraham - Bill  
Callahan

7/27 1 N Worcester NABA - Wendy Howes

(cont'd on p. 25)



Giant Swallowtail  
(*Papilio cresphontes*),  
8/10/19, Sheffield, MA,  
Alan Rawle



Baltimore Checkerspot  
(*Euphydryas phaeton*), 7/10/19,  
Don Adams



Eastern Comma,  
(*Polygonas comma*),  
9/7/19,  
Sterling,  
MA,  
Garry  
Kessler

Delaware Skipper (*Anatrytone logan*),  
7/6/19, Concord, MA, Mark Rosenstein



Common Sootywing (*Pholisora  
catullus*), 9/3/19, Boston, MA,  
Lucy Merrill-Hills



Last year at the end of August, I led my first walk for the Massachusetts Butterfly Club. Five people joined me at Arnold Arboretum in Boston, Ma for a three-hour walk at one of my favorite locations to look for butterflies, and we saw seventeen species.

Two members of the group, Garry Kessler and Annie Reid brought binoculars; I usually just bring my camera. We were standing near two large clumps of Mountain Mint, a location that attracts many types of bees, wasps, butterflies and other insects, when Annie spotted first one, then another White-M Hairstreak on the mint, a species I had not seen there in two years. Garry got a photo of the butterfly, while I was so excited, I could not focus my camera, resulting in a nice shot of the mint.



About ten days later, I was back at the Arboretum looking for those White-M Hairstreaks again, and this time I was ready with my camera, getting a shot of each side of the butterfly. The ventral side had a rip at the edge of the wing, affording a nice view of the brilliant blue dorsal side. *Lucy Merrill-Hills*



Monarchs (*Danaus plexippus*) on Blue Mistflower, 9/9/19, Wendy Howes





Viceroy (*Limenitis archippus*) and White Admiral (*Limentis arthemis*), on dead Smooth Greensnake (*Opheodryas vernalis*), 8/15/19, Lee, Penobscot Co., ME, Bo Zarembo.

Bo's photograph documents a new township record for Smooth Greensnake in Maine!

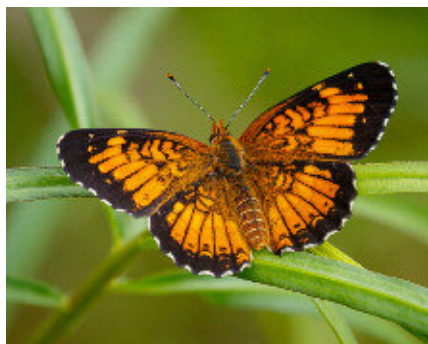


Peck's Skipper (*Polites peckius*), 8/27/19, Concord, MA, Linda Graetz (above)



Gray Hairstreak (*Strymon melinus*), 8/25/19, Whately, MA, Bill Benner (above)

Common Buckeye (*Junonia coenas*), 6/23/19, Shrewsbury, MA, Bruce deGraaf (right): "I think he likes me"



Harris' Checkerspots (*Chlosyne harrisii*), 6/17/19, Shrewsbury, MA, Bruce deGraaf



Milbert's Tortoiseshell (*Nymphalis milberti*), 9/21/19, Adams, MA, Garry Kessler (above)



Pearl Crescent (*Phyciodes tharos*), 5/22/19, Westborough, MA, Nancy Burke (above)

Question Mark (*Polygonia interrogatoris*), 8/14/19, Williamstown, MA, Pam Weatherbee (below)



Long-tailed Skipper (*Urbanus proteus*), 9/29/19, Groton, MA, Tom Murray (right)



Black Swallowtail (*Papilio polyxenes*), 7/19/19, Southborough, MA, Dawn Vesey (above)



## Henry's Elfin (cont'd.)

- 4/25 13 Burma Road, Milton - Madeline  
Champagne, Lucy Merrill-Hills  
4/25 5 Dorchester, Boston - Rosemary Mosco  
4/25 3 Fountain Park, Wilbraham - Bill  
Callahan  
4/25 1 Lamson Rd, Foxborough - Madeline  
Champagne  
4/29 5 Burma Road, Milton - Lucy  
Merrill-Hills  
5/6 4 Burma Road, Milton - Lucy  
Merrill-Hills  
5/7 1 G22 Quabbin - Ron & Sue Cloutier  
5/8 2 Fountain Park, Wilbraham - Bill  
Callahan  
5/15 1 Burma Road, Milton - Lucy  
Merrill-Hills  
5/22 2 Otter River SF, Winchendon - Mark  
Lynch, Sheila Carroll

## Bog Elfin

- 5/25 2 Ashburnham - Bill & Nancy Callahan

## Eastern Pine Elfin

- 4/23 1 Montague Plains - Nick Dorian  
4/24 5 New Salem - Dave Small  
4/29 11 MSSF, Plymouth - Steve Moore,  
Garry Kessler, Annie Reid  
5/5 20 Franklin - Keith Shaw  
5/7 13 MSSF, Plymouth - Michael Newton  
5/8 1 Yarmouth, Flax Pond - Joe Dwelly  
5/9 9 Lamson Rd, Foxborough - Madeline  
Champagne  
5/11 2 Holliston - Richard Hildreth  
5/18 8 Montague Plains - Bill & Nancy  
Callahan  
5/22 19 Otter River SF, Winchendon - Mark  
Lynch, Sheila Carroll  
5/25 4 Ashburnham - Bill & Nancy Callahan  
5/27 2 Plainfield - Mark Fairbrother  
5/31 7 MSSF, Plymouth - Michael Newton  
6/1 1 Cummington - Henry Chinaski  
6/7 1 Hennessey Property, Grafton - MBC  
Trip

## Juniper Hairstreak

- 4/24 1 World's End, Hingham - Greg Dysart  
5/6 1 Dinosaur Footprints TTOR, Holyoke -  
Bill Callahan  
5/7 1 World's End, Hingham - Michael  
Newton  
5/20 2 Plum Island, Newbury - Matt Arey  
5/22 2 HPM, Woburn - Mark Rosenstein  
6/1 4 HPM, Woburn - Matt Arey  
7/26 3 HPM, Woburn - Mark Rosenstein

## Hessel's Hairstreak

- 5/18 2 Ponkopaug Bog, Canton - Michael  
Newton

## White M Hairstreak

- 5/9 1 Lamson Rd, Foxborough - Madeline  
Champagne  
5/26 1 MBWMA, Newbury - Matt Arey  
8/17 2 Nasketucket Bay Reserve, Mattapoissett  
- MBC Trip  
8/22 1 Dartmouth - Brian Cassie  
8/31 2 Arnold Arboretum, Boston - MBC Trip  
9/1 1 Norton - Brian Cassie  
9/9 1 Arnold Arboretum, Boston - Lucy  
Merrill-Hills  
9/21 1 Plum Island, Newbury - Matt Arey  
9/28 1 Essex County - Matt Arey

## Gray Hairstreak

- 4/17 1 Correllus State Forest, West Tisbury -  
Matt Pelikan  
4/23 1 Montague Plains - Nick Dorian  
4/25 1 HPM, Woburn - Howard Hoople  
5/8 2 Crane WMA, Falmouth - Joe Dwelly  
5/9 3 Wilbraham Middle School grounds - Bill  
Callahan  
5/18 1 Weir Hill Res, N Andover - MBC Trip  
5/24 1 FS WMA, Longmeadow - Bill Callahan  
5/25 3 Chelmsford PL - Tom Murray  
5/26 1 Shrewsbury PL - Bruce deGraaf  
6/1 2 Lamson Rd, Foxborough - Madeline  
Champagne  
6/8 1 MBWMA, Newbury - Michael Newton  
7/7 1 N Berkshire NABA - Tom Tynning *et al.*  
7/9 3 Crane WMA, Falmouth - Joe Dwelly  
7/13 17 Blackstone Valley NABA - Tom Dodd  
*et al.*  
7/19 6 Norton - Brian Cassie  
7/20 7 Falmouth NABA - Joe Dwelly *et al.*  
8/10 1 Grafton - Dolores Price  
8/17 1 Hudson - Linda Strzepek  
8/24 1 Holliston - Richard Hildreth  
8/26 1 East Wareham - Laura Sayward  
8/31 4 BMB WS, Worcester - MBC Trip  
9/8 1 Petersham - Mark Lynch, Sheila Carroll  
9/16 1 Natick - Glenn Long  
9/21 1 Arnold Arboretum, Boston - Lucy  
Merrill-Hills  
9/25 1 Groton, Wallace Road - Tom Murray  
10/5 1 Crane WMA, Falmouth - Joe Dwelly  
10/13 1 Plum Island, Newbury - Matt Arey

## Red-banded Hairstreak

- 8/17 1 Nasketucket Bay Reserve, Mattapoissett  
- MBC Trip  
8/31 2 AP, Dartmouth - Lauren Miller-  
Donnelly *et al.*  
9/8 14 AP Allens Neck, Dartmouth - MBC  
Trip  
9/9 3 AP Allens Neck, Dartmouth - Mark  
Rosenstein  
9/14 2 AP, Dartmouth - Matt Arey

10/5 1 Arnold Arboretum, Boston - Lucy Merrill-Hills

### Early Hairstreak

6/1 1 Lanesborough - MBC Trip

6/1 1 North Adams, Mt. Greylock State Res. - MBC Trip

### Eastern Tailed-Blue

4/25 1 Fall River - Doug Hlousek

5/6 1 Barnes Airport, Westfield - Bill Callahan

5/7 1 Thompson Fields, Harwich - Joe Dwelly

5/8 13 Crane WMA, Falmouth - Joe Dwelly

5/18 10 Florence - Tom Gagnon

5/18 10 HPM, Woburn - Michael Newton

5/21 4 Old County, W Tisbury - Matt Pelikan

5/23 10 Chelmsford - Tom Murray

5/25 16 Sherborn - Michael Newton

5/26 13 Shrewsbury PL - Bruce deGraaf

6/2 1 Bernardston - Mark Fairbrother

6/9 3 Gill - Bill & Nancy Callahan

7/4 7 C Franklin NABA - Mark Fairbrother *et al.*

7/5 2 S Berkshire NABA - Rene Wendell *et al.*

7/13 33 Blackstone Valley NABA - Tom Dodd *et al.*

7/20 19 Falmouth NABA - Joe Dwelly *et al.*

8/2 3 Boston Nature Center - Lucy Merrill-Hills

8/3 11 Crane WMA, Falmouth - Joe Dwelly

8/16 1 Marston Mills Airport - Serge Matheny

8/24 21 Oak St. PL, Shrewsbury - Bruce deGraaf

9/1 3 Grafton - Dolores Price, Martin St. Onge

9/9 2 Arnold Arboretum, Boston - Lucy Merrill-Hills

9/15 21 Oak St. PL, Shrewsbury - Bruce deGraaf

9/25 4 Crane WMA, Falmouth - Alison Robb

9/27 2 Sandisfield - Mark Lynch, Sheila Carroll

10/2 1 Nahant - Linda Pivacek

10/13 1 Oak St. PL, Shrewsbury - Bruce deGraaf

10/14 1 Boston Nature Center - Lucy Merrill-Hills

### Spring Azure

4/6 1 Signal Hill, Canton - Madeline Champagne

4/7 1 Laughing Brook WS, Hampden - Bill & Nancy Callahan

4/14 2 Holliston - Richard Hildreth

4/17 1 Correllus State Forest, West Tisbury - Matt Pelikan

4/18 8 Northborough, Edmund Hill - Steve Moore, Garry Kessler & Annie Reid

4/20 1 West Whately - Bill Benner

4/23 15 McDonald Nature Preserve, Wilbraham - Bill Callahan

4/24 10 New Salem - Dave Small

4/25 30 Dorchester, Boston - Rosemary Mosco

4/25 59 Burma Road, Milton - Madeline Champagne, Lucy Merrill-Hills

4/25 12 Yarmouth, Flax Pond - Joe Dwelly

4/25 13 Chauncy Pond, Westborough - Steve Moore, Barbara Volkle

4/29 35 MSSF, Plymouth - Steve Moore, Garry Kessler & Annie Reid

4/29 57 Burma Road, Milton - Lucy Merrill-Hills

4/29 11 Upton State Forest - Tom Dodd

5/7 10 Thompson Fields, Harwich - Joe Dwelly

5/9 49 Burma Road, Milton - Madeline Champagne

5/16 3 MSSF, Plymouth - Steve Moore

5/20 10 Plum Island, Newbury - Matt Arey

5/22 18 Otter River SF, Winchendon - Mark Lynch, Sheila Carroll

5/27 14 Ware River Watershed, Barre - Mark Lynch, Sheila Carroll

6/1 6 Rutland - Dolores Price, Marvin St. Onge

6/8 6 Windsor - Bill & Nancy Callahan

6/29 1 Grafton - Price, Miller & St. Onge

7/12 1 Bullit TOTOR, Ashfield - Bill Callahan

### 'Cherry Gall' Azure

5/19 1 Delaney WMA, Stow - MBC Trip

5/26 1 MBWMA, Newbury - Matt Arey

5/31 14 Katama, Edgartown - Matt Pelikan

6/1 1 MBWMA, Newbury - Matt Arey

7/13 2 C Berkshire NABA - Tom Tynning *et al.*

### 'Summer' Azure

4/24 1 Lincoln - Linda Graetz

4/29 3 Burma Road, Milton - Lucy Merrill-Hills

6/14 1 Arnold Arboretum, Boston - Lucy Merrill-Hills

6/22 5 Great Barrington - Bill & Nancy Callahan

7/4 15 C Franklin NABA - Mark Fairbrother *et al.*

7/7 2 N Berkshire NABA - Tom Tynning *et al.*

7/13 7 C Berkshire NABA - Tom Tynning *et al.*

7/13 8 Blackstone Valley NABA - Tom Dodd *et al.*

7/14 3 LPWS, Barnstable - Joe Dwelly

7/21 30 Northampton NABA - Mark Fairbrother *et al.*

7/27 22 N Worcester NABA - Wendy Howes *et al.*

7/29 11 Windsor - Bill Callahan

8/8 1 Natick - Greg Dysart

8/17 2 Nasketucket Bay Reserve, Mattapoisett  
- MBC Trip  
9/8 10 AP Allens Neck, Dartmouth - MBC  
Trip  
9/28 5 Sylvan Nursery, Dartmouth - Michael  
Newton  
10/13 1 Belchertown - Lucy Merrill-Hills

### **Azure sp.**

5/18 20 HPM, Woburn - Michael Newton  
5/22 18 Burma Road, Milton - Lucy  
Merrill-Hills  
5/25 10 Sherborn - Michael Newton  
5/27 13 Crane WMA, Falmouth - Joe Dwelly  
5/31 20 Nasketucket Bay Reserve,  
Mattapoisett - Michael Newton  
6/2 5 Lime Kiln, Sheffield - Bill & Nancy  
Callahan  
6/8 3 MBWMA, Newbury - Michael Newton  
6/26 1 HPM, Woburn - Steve Moore  
7/25 2 Oak St. PL, Shrewsbury - Bruce  
deGraaf  
8/18 1 Conte NWR, Hadley - Karl & Elise  
Barry

### **Silvery Blue**

5/16 1 McDonald Nature Preserve, Wilbraham  
- Bill Callahan  
5/19 1 Littleton - Greg Dysart  
5/19 8 Delaney WMA, Stow - MBC Trip  
5/20 1 Breakneck Hill Conservation Land,  
Southborough - Dawn Vesey  
5/22 2 Moore SP, Paxton - Karl & Elise Barry  
5/22 3 Pepperell - Tom Murray  
5/24 20 Pepperell - Tom Murray  
5/27 5 McDonald Nature Preserve, Wilbraham  
- Bill & Nancy Callahan  
6/1 3 Rutland - Dolores Price, Marvin St.  
Onge  
6/1 2 Moran WMA, Windsor - MBC Trip  
6/2 3 Hennessey Property, Grafton - Dolores  
Price, Marvin St. Onge  
6/3 2 Surrenden Farm, Groton - Tom Murray  
6/3 1 Moore SP, Paxton - Kristin Steinmetz  
6/4 1 Westminster - Scott Langlais  
6/5 3 Windsor - Gael Hurley  
6/7 2 McDonald Nature Preserve, Wilbraham  
- Bill Callahan  
6/7 3 Hennessey Property, Grafton - MBC  
Trip  
6/8 6 Windsor - Bill & Nancy Callahan

### **American Snout**

5/25 1 Sherborn - Michael Newton  
5/27 1 Bolton Flats, Lancaster - Tom Murray  
5/31 1 Nasketucket Bay Reserve, Mattapoisett  
- Michael Newton

5/31 1 Dinosaur Footprints TTOR, Holyoke -  
Bill Callahan  
6/8 1 IRWS, Topsfield - Michael Newton  
6/9 1 Lynn - Brian Cassie  
6/30 1 Georgetown - Matt Arey  
7/5 1 S Berkshire NABA - Rene Wendell *et al.*  
7/7 1 Cambridge - Rosemary Mosco  
7/12 1 Northampton CG - Nancy Callahan  
7/14 1 Springfield - Nancy Callahan  
7/15 1 Arnold Arboretum, Boston - Lucy  
Merrill-Hills  
7/21 1 Northampton NABA - Mark Fairbrother  
*et al.*  
7/21 1 Plum Island, Newbury - Matt Arey  
7/26 1 Springfield - Bill Callahan  
7/26 1 Plum Island, Newbury - Devon  
Griswold  
7/27 1 Plum Island, Newbury - Devon  
Griswold  
7/27 1 Bart's Cobble, Sheffield - MBC Trip  
7/27 1 Lime Kiln, Sheffield - MBC Trip  
7/29 2 Arnold Arboretum, Boston - Lucy  
Merrill-Hills  
8/1 3 Forest Park, Springfield - Bill Callahan  
8/3 1 Squantum, Quincy - Erik Nielsen  
8/4 2 Bart's Cobble, Sheffield - Peter  
DeGennaro  
8/4 1 S Egremont, Egremont - Mark Lynch,  
Sheila Carroll  
8/4 1 Forest Park, Springfield - Ron & Sue  
Cloutier  
8/4 1 Northampton CG - Tom Gagnon, Steve  
Moore, Barbara Volkle  
8/5 1 Arnold Arboretum, Boston - Lucy  
Merrill-Hills  
8/12 1 Northampton CG - Tom Gagnon  
8/12 1 Arnold Arboretum, Boston - Lucy  
Merrill-Hills  
9/1 1 Northampton CG - MBC Trip  
9/15 1 Arnold Arboretum, Boston - Lucy  
Merrill-Hills  
9/22 1 Mt. Greylock SR, Lanesborough - Bill  
Callahan

### **Variigated Fritillary**

8/4 2 Medfield - Walt Webb  
8/26 1 Nasketucket Bay Reserve, Mattapoisett  
- Mark Rosenstein  
9/5 2 Mansfield - Brian Cassie  
9/9 1 Florence Community Gardens - Bill  
Callahan  
9/20 2 Northampton CG - Bill Callahan  
9/25 1 Northampton CG - Tom Gagnon  
9/28 1 Gooseberry Neck, Westport - Michael  
Newton  
10/13 1 Northampton CG - Bill & Nancy  
Callahan

10/14 1 Foxborough - Madeline Champagne

### **Great Spangled Fritillary**

6/21 1 McDonald Nature Preserve, Wilbraham  
- Bill Callahan

6/30 5 MBWMA, Newbury - Matt Arey

7/4 28 C Franklin NABA - Mark Fairbrother  
*et al.*

7/7 12 N Berkshire NABA - Tom Tynning *et al.*

7/13 5 Blackstone Valley NABA - Tom Dodd  
*et al.*

7/13 6 C Berkshire NABA - Tom Tynning *et al.*

7/19 16 Norton - Brian Cassie

7/20 3 Rough Meadows WS, Rowley - Matt  
Arey

7/20 2 October Mountain SF, Washington -  
Bill & Nancy Callahan

7/27 9 N Worcester NABA - Wendy Howes  
*et al.*

8/2 1 Moran WMA, Windsor - Bill Callahan

8/5 1 Cummington - Thomas Farrington

8/27 1 Williamstown - Pam Weatherbee

9/1 1 Grafton - Dolores Price, Martin St. Onge

9/5 4 Northampton CG - Garry Kessler

9/21 1 Cummington - Henry Chinaski

9/22 6 Northampton CG - MBC Trip

9/28 1 Groton, Wallace Road - Tom Murray

10/1 1 Northampton CG - Bill Callahan

### **Aphrodite Fritillary**

6/28 4 Dubuque SF, Hawley - Mark Lynch,  
Sheila Carroll

7/4 2 C Franklin NABA - Mark Fairbrother  
*et al.*

7/7 3 N Berkshire NABA - Tom Tynning *et al.*

7/14 1 McDonald Nature Preserve, Wilbraham  
- Bill & Cara Callahan

7/20 1 Rough Meadows WS, Rowley - Matt  
Arey

8/25 1 Moose Brook Preserve, Hardwick -  
Wendy Howes, Alan Rawle

9/9 1 Hardwick - Wendy Howes

### **Atlantis Fritillary**

6/27 1 Berkshire County - Gael Hurley

6/28 3 Dubuque SF, Hawley - Mark Lynch,  
Sheila Carroll

7/7 9 Windsor - Bill & Nancy Callahan

7/7 1 N Berkshire NABA - Tom Tynning *et al.*

7/12 2 Bullit TTOR, Ashfield - Bill Callahan

7/12 7 Windsor - Bill Callahan

7/13 4 C Berkshire NABA - Tom Tynning *et al.*

7/16 10 Windsor - Bill Callahan

7/19 2 Windsor - Bill Callahan

7/19 6 SF, Savoy - Bill Callahan

7/19 17 Monroe - Mark Lynch, Sheila Carroll

7/20 4 Berkshire County - Peter DeGennaro

7/20 4 October Mountain SF, Washington -  
Bill & Nancy Callahan

7/29 7 Windsor - Bill Callahan

8/2 3 Windsor - Bill Callahan

### **Silver-bordered Fritillary**

5/25 1 Sherborn - Michael Newton

5/27 1 Plainfield - Mark Fairbrother

6/2 1 Carlisle CA Cranberry Bog - Linda  
Graetz

6/9 5 Maudslay SP, NP - Bo Zaremba

7/4 5 C Franklin NABA - Mark Fairbrother  
*et al.*

7/13 3 Blackstone Valley NABA - Tom Dodd  
*et al.*

7/19 21 Norton - Brian Cassie

8/2 9 Windsor - Bill Callahan

9/1 4 Norton - Brian Cassie

9/9 1 Leyden Road, Greenfield - Mark  
Fairbrother

9/21 3 Plum Island, Newbury - Matt Arey

10/13 1 Plum Island, Newbury - Matt Arey

### **Meadow Fritillary**

7/5 13 S Berkshire NABA - Rene Wendell  
*et al.*

7/7 42 N Berkshire NABA - Tom Tynning *et al.*

7/12 1 Bullit TTOR, Ashfield - Bill Callahan

8/4 3 S Egremont, Egremont - Mark Lynch,  
Sheila Carroll

### **Harris' Checkerspot**

6/14 3 Worcester - Garry Kessler

6/17 1 Shrewsbury High School - Bruce  
deGraaf

6/17 1 Shrewsbury - Bruce deGraaf

### **Pearl Crescent**

5/16 2 McDonald Nature Preserve, Wilbraham  
- Bill Callahan

5/16 1 Adams Farm, W. Bridgewater - Don  
Adams

5/18 1 Weir Hill Res, N Andover - MBC Trip

5/22 1 Dunstable - Tom Murray

5/25 8 Sherborn - Michael Newton

5/26 9 NP - Bo Zaremba

5/27 43 Crane WMA, Falmouth - Joe Dwelly

5/31 20 Nasketucket Bay Reserve,  
Mattapoisett - Michael Newton

5/31 100 Correllus State Forest, West Tisbury  
- Matt Pelikan

5/31 16 Petersham - Mark Lynch, Sheila  
Carroll

6/1 8 Sheffield - Bill Benner

6/2 8 Bart's Cobble, Sheffield - Bill & Nancy  
Callahan

6/5 7 Oak St. PL, Shrewsbury - Bruce deGraaf

6/8 18 Hinsdale - Mark Lynch, Sheila Carroll

6/9 21 Maudslay SP, NP - Bo Zaremba

6/9 6 Gill - Bill & Nancy Callahan  
 6/15 6 NCM, Petersham - Bill & Nancy Callahan  
 6/22 4 Great Barrington - Bill & Nancy Callahan  
 7/7 3 N Berkshire NABA - Tom Tynning *et al.*  
 7/13 9 Blackstone Valley NABA - Tom Dodd *et al.*  
 7/20 23 Falmouth NABA - Joe Dwelly *et al.*  
 7/21 46 Northampton NABA - Mark Fairbrother *et al.*  
 7/27 38 Brewster NABA - Joe Dwelly *et al.*  
 7/27 37 N Worcester NABA - Wendy Howes *et al.*  
 8/1 14 Oak St. PL, Shrewsbury - Bruce deGraaf  
 8/3 12 Hubbardston, Williamsville Road - MBC Trip  
 8/3 66 Crane WMA, Falmouth - Joe Dwelly  
 8/4 8 S Egremont, Egremont - Mark Lynch, Sheila Carroll  
 8/9 16 Rough Meadows WS, Rowley - Bo Zaremba  
 8/11 10 Grafton - Dolores Price, Martin St. Onge  
 8/20 25 Plum Island, Newbury - Matt Arey  
 8/24 18 Sandisfield - Mark Lynch, Sheila Carroll  
 8/24 85 Long Point, W Tisbury - Matt Pelikan  
 8/26 8 Nasketucket Bay Reserve, Mattapoissett - Mark Rosenstein  
 9/5 9 Williamstown - Bo Zaremba  
 9/22 6 Florence Community Gardens - MBC Trip  
 9/24 12 Plum Island, Newbury - Matt Arey  
 9/28 2 New Salem - Karl & Elise Barry  
 10/1 1 Swampscott - Herrick Wales  
 10/5 1 FS WMA, Longmeadow - Bill & Nancy Callahan  
 10/8 1 Adams - Jeanne Boudreau  
 10/13 3 Plum Island, Newbury - Matt Arey

### **Baltimore Checkerspot**

6/21 1 Adams Farm, W. Bridgewater - Don Adams  
 6/24 1 GITW, Framingham - Greg Dysart  
 6/27 20 Adams Farm, W. Bridgewater - Don Adams  
 6/29 2 Ware - Brian Klassanos  
 6/30 41 Crane WMA, Falmouth - Joe Dwelly  
 7/9 70 Crane WMA, Falmouth - Joe Dwelly  
 7/12 8 Gill - Bill Callahan  
 7/13 45 Blackstone Valley NABA - Tom Dodd *et al.*  
 7/14 1 LPWS, Barnstable - Joe Dwelly  
 7/20 2 October Mountain SF, Washington - Bill & Nancy Callahan

7/20 3 Berkshire County - Peter DeGennaro  
 7/21 16 Northampton NABA - Mark Fairbrother *et al.*

### **Question Mark**

5/20 1 Plum Island, Newbury - Matt Arey  
 5/25 9 Sherborn - Michael Newton  
 6/3 1 Adams Farm, W. Bridgewater - Don Adams  
 6/8 20 MBWMA, Newbury - Michael Newton  
 6/15 3 BMB WS, Worcester - Michael Newton  
 6/22 4 Great Barrington - Bill & Nancy Callahan  
 7/4 5 C Franklin NABA - Mark Fairbrother *et al.*  
 7/5 8 S Berkshire NABA - Rene Wendell *et al.*  
 7/7 5 N Berkshire NABA - Tom Tynning *et al.*  
 7/14 22 Worcester Airport - MBC Trip  
 7/21 8 Northampton NABA - Mark Fairbrother *et al.*  
 7/27 4 Bart's Cobble, Sheffield - MBC Trip  
 8/3 1 Squantum, Quincy - Erik Nielsen  
 8/14 1 Williamstown - Pam Weatherbee  
 8/24 2 Sandisfield - Mark Lynch, Sheila Carroll  
 9/15 1 Appleton Farms, Ipswich - MBC Trip  
 9/27 1 Gooseberry Neck, Westport - Brian Cassie  
 10/5 1 Ashland - Michael Newton  
 10/21 1 Plum Island, Newbury - Marjorie Watson  
 11/19 1 Nantucket - Trish Pastuszak

### **Eastern Comma**

3/28 1 Boxford - Russ Hopping  
 3/30 6 Mt. Tom State Reservation, Holyoke - Bill & Nancy Callahan  
 4/6 3 Groton - Tom Murray  
 4/16 3 Burma Road, Milton - Lucy Merrill-Hills  
 4/25 2 Windsor - Tom Gagnon  
 5/9 1 Wilbraham Middle School grounds - Bill Callahan  
 5/23 3 Holliston - Richard Hildreth  
 5/31 3 Williamsburg - Carol Duke  
 6/8 2 Hinsdale - Mark Lynch, Sheila Carroll  
 6/30 10 MBWMA, Newbury - Matt Arey  
 7/4 12 C Franklin NABA - Mark Fairbrother *et al.*  
 7/5 15 S Berkshire NABA - Rene Wendell *et al.*  
 7/14 7 Petersham - Mark Lynch, Sheila Carroll  
 7/21 14 Northampton NABA - Mark Fairbrother *et al.*  
 7/28 4 Windsor Dam, Ware - Ron & Sue Cloutier  
 8/4 4 S Egremont, Egremont - Mark Lynch, Sheila Carroll



8/17 4 FS WMA, Longmeadow - MBC Trip  
9/7 2 Sterling - Garry Kessler  
9/27 14 Sandisfield - Mark Lynch, Sheila  
Carroll  
10/5 1 Arcadia WS, Easthampton - Sarah  
Lambdin  
10/14 2 WMWMA, New Braintree - Wendy  
Howes, Alan Rawle  
10/26 1 Plum Island, Newbury - Matt Arey  
11/4 1 Deer Park Reserve, Hardwick - Wendy  
Howes

### **Green Comma**

9/23 1 North Adams, Mt. Greylock State Res.  
- Tom Gagnon

### **Gray Comma**

4/7 1 MBWMA, Newbury - Matt Arey  
4/25 1 Berkshire County - Tom Gagnon  
5/16 1 West Whately - Bill Benner  
6/30 1 MBWMA, Newbury - Matt Arey  
7/16 1 Moran WMA, Windsor - Bill Callahan  
7/27 6 Bart's Cobble, Sheffield - MBC Trip  
8/4 2 Lime Kiln, Sheffield - Peter DeGennaro  
8/24 1 Sandisfield - Mark Lynch, Sheila  
Carroll  
9/11 1 Hinsdale - Gael Hurley

### **Compton Tortoiseshell**

4/29 1 Burma Road, Milton - Lucy  
Merrill-Hills

### **Mourning Cloak**

3/20 1 Muddy Brook WMA, Hardwick -  
Wendy Howes  
3/24 1 Woburn, Mary Cummings Estate -  
Marj Rines  
3/28 1 W Boylston - Loree Griffin Burns  
3/30 1 Mt. Tom State Reservation, Holyoke -  
Bill & Nancy Callahan  
3/30 1 Lenox - Jonathan Pierce  
3/30 3 Signal Hill, Canton - Madeline  
Champagne  
4/6 1 Dorchester, Boston - Rosemary Mosco  
4/7 3 Laughing Brook WS, Hampden - Bill &  
Nancy Callahan  
4/7 1 Boone Hill, Ipswich - Marjorie Watson  
4/13 7 Burma Road, Milton - Lucy  
Merrill-Hills  
4/14 1 Ward Res, Andover - Howard Hoople  
4/17 1 Cummington - Thomas Farrington  
4/19 1 Allens Pond Wildlife Sanctuary,  
Dartmouth - Lauren Miller-Donnelly  
4/24 1 Athol - Dave Small  
4/29 2 Brimfield - Mark Lynch, Sheila Carroll  
4/29 1 MSSF, Plymouth - Steve  
Moore, Garry Kessler & Annie Reid  
5/9 3 Burma Road, Milton - Madeline  
Champagne

5/11 3 Petersham - Mark Lynch, Sheila Carroll  
5/18 1 Spencer - Karl & Elise Barry  
5/19 1 Delaney WMA, Stow - MBC Trip  
5/27 1 Plainfield - Mark Fairbrother  
6/1 1 Sheffield - Bill Benner  
6/8 1 MBWMA, Newbury - Michael Newton  
6/8 3 Hinsdale - Mark Lynch, Sheila Carroll  
7/13 4 Blackstone Valley NABA - Tom Dodd  
*et al.*  
7/20 1 October Mountain SF, Washington -  
Bill & Nancy Callahan  
7/21 1 Provincetown - Sherri VandeAkker  
7/21 1 Plum Island, Newbury - Matt Arey  
8/24 6 Sandisfield - Mark Lynch, Sheila  
Carroll  
9/17 1 Westport - Brian Cassie  
9/20 1 Huntington - Mark Lynch, Sheila  
Carroll  
10/13 1 MBWMA, Newbury - Matt Arey  
10/14 1 WMWMA, New Braintree - Wendy  
Howes, Alan Rawle  
10/21 1 Hardwick - Wendy Howes  
11/1 1 Hadley - Tom Murray

### **Milbert's Tortoiseshell**

7/4 1 C Franklin NABA - Mark Fairbrother  
*et al.*  
7/7 1 Worthington - Mark Lynch, Sheila  
Carroll  
7/29 1 Windsor - Bill Callahan  
8/6 1 Westminster - Scott Langlais  
9/17 1 Cummington - Thomas Farrington  
9/21 1 Easthampton - Bruce King  
9/21 9 North Adams, Mt. Greylock State Res.  
- Steve Moore *et al.*  
9/28 1 Northampton CG - Ted Gilliland  
10/2 1 Shelburne Falls - Jeremy Coleman  
10/4 1 Chicopee - Wioletta Rarog  
10/5 1 West Whately - Bill Benner  
10/5 1 Belchertown - Tom Gagnon  
10/8 1 Adams - Jeanne Boudreau  
10/14 1 Warwick - Ann Kendall  
10/14 1 Williamsburg - Mark Fairbrother  
10/14 1 WMWMA, New Braintree - Wendy  
Howes, Alan Rawle  
10/19 1 E Longmeadow - Deborah Bentley  
10/24 1 Worcester - Dan Berard  
10/26 1 Bolton - Dawn Vesity

### **American Lady**

4/16 1 Thompson Fields, Harwich - Joe Dwelly  
4/17 1 Arlington Heights - Lisa Wolfe  
4/17 2 Stichter Yard, Newbury - Sharon  
Stichter  
4/23 1 Quabbin Park, Belchertown - Lucy  
Allen  
4/25 6 Thompson Fields, Harwich - Joe Dwelly  
5/6 3 Barnes Airport, Westfield - Bill Callahan



- 5/6 14 Windsor - Tom Gagnon  
5/7 13 MSSF, Plymouth - Michael Newton  
5/8 38 Crane WMA, Falmouth - Joe Dwelly  
5/18 8 Chelmsford PL - Tom Murray  
5/18 3 Williamstown - Bo Zaremba  
5/20 75 Plum Island, Newbury - Matt Arey  
5/22 10 HPM, Woburn - Mark Rosenstein  
5/25 3 Williamsburg Flower Hill Farm - Carol Duke  
5/27 28 Crane WMA, Falmouth - Joe Dwelly  
5/31 50 Nasketucket Bay Reserve, Mattapoisett - Michael Newton  
6/1 15 MBWMA, Newbury - Matt Arey  
6/1 1 Sheffield - Bill Benner  
6/12 1 Champagne yard, Foxborough - Madeline Champagne  
6/27 2 Muddy Brook WMA, Hardwick - MBC Trip  
7/4 12 C Franklin NABA - Mark Fairbrother *et al.*  
7/9 4 Crane WMA, Falmouth - Joe Dwelly  
7/13 10 Blackstone Valley NABA - Tom Dodd *et al.*  
7/20 23 Falmouth NABA - Joe Dwelly *et al.*  
7/27 7 Brewster NABA - Joe Dwelly *et al.*  
8/18 1 Conte NWR, Hadley - Karl & Elise Barry  
8/20 10 Plum Island, Newbury - Matt Arey  
8/30 2 Truro - Deborah Radovsky  
8/31 21 Sylvan Nursery, Dartmouth - Lauren Miller-Donnelly *et al.*  
9/5 1 Williamstown - Bo Zaremba  
9/9 4 Northampton CG - Bill & Nancy Callahan  
9/17 5 SBSR - Lucy Merrill-Hills  
9/24 25 Plum Island, Newbury - Matt Arey  
9/28 20 AP Field Station, Dartmouth - Michael Newton  
9/29 1 Fall River - Doug Hlousek  
10/4 1 West Whately - Bill Benner  
10/13 25 Newbury, Tendercrop Farm - Matt Arey  
10/26 7 Nahant Thicket - Linda Pivacek  
11/1 1 Arlington Heights - Lisa Wolfe  
11/6 1 Plymouth - Robin Gross
- Painted Lady**  
5/6 3 Burma Road, Milton - Lucy Merrill-Hills  
5/7 2 MSSF, Plymouth - Michael Newton  
5/20 10 Plum Island, Newbury - Matt Arey  
5/31 15 Nasketucket Bay Reserve, Mattapoisett - Michael Newton  
6/9 1 Gill - Mark Fairbrother  
6/23 5 DWWS, Marshfield - Brian Cassie  
7/13 5 Blackstone Valley NABA - Tom Dodd *et al.*
- 7/21 8 Northampton NABA - Mark Fairbrother *et al.*  
8/2 1 Windsor - Bill Callahan  
8/9 16 Westport - Mark Lynch, Sheila Carroll  
8/20 12 Plum Island, Newbury - Matt Arey  
8/31 19 Sylvan Nursery, Dartmouth - Lauren Miller-Donnelly *et al.*  
9/1 7 Northampton CG - MBC Trip  
9/9 15 Northampton CG - Bill & Nancy Callahan  
9/9 27 Sylvan Nursery, Dartmouth - Mark Rosenstein  
9/11 12 Arlington Heights - Peter Loshin  
9/14 12 Falmouth - Alison Robb  
9/15 6 Southborough Community Garden - Dawn Vesey  
9/17 245 Westport - Brian Cassie  
9/19 95 Sylvan Nursery, Dartmouth - Steve Moore *et al.*  
9/21 4 Shelburne Falls - Jeff Boettner  
9/22 16 Mt. Greylock SR, Lanesborough - Bill Callahan  
9/24 75 Plum Island, Newbury - Matt Arey  
9/26 10 Adams Farm, W. Bridgewater - Don Adams  
9/27 70 Gooseberry Neck, Westport - Brian Cassie  
9/28 100 Essex County - Matt Arey  
9/28 50 AP Field Station, Dartmouth - Michael Newton  
9/29 75 Newbury, Tendercrop Farm - Matt Arey  
9/29 8 West Whately - Bill Benner, Joe Wicinski  
9/30 3 Chicopee - Wioletta Rarog  
10/1 1 Adams - Jeanne Boudreau  
10/5 1 WMWMA, New Braintree - Wendy Howes, Alan Rawle  
10/6 75 Newbury, Tendercrop Farm - Matt Arey  
10/7 25 Dartmouth - Lauren Miller-Donnelly  
10/13 3 Andover, Lightning Tree Reservation - Howard Hoople  
10/14 2 Monroe - Mark Fairbrother  
10/24 9 Nahant Thicket - Linda Pivacek  
10/26 1 Greenfield - Erica Burns  
11/2 2 Deer Island, Winthrop - Fred Bouchard
- Red Admiral**  
3/31 1 Scituate - Dennis Peacock  
4/16 1 Northborough, Edmund Hill - Steve Moore  
5/6 4 Windsor - Tom Gagnon  
5/9 7 Burma Road, Milton - Madeline Champagne  
5/18 1 Williamsburg Flower Hill Farm - Carol Duke

5/18 3 Williamstown - Bo Zaremba  
 5/20 100 Plum Island, Newbury - Matt Arey  
 5/25 1 Ashburnham - Bill & Nancy Callahan  
 5/25 1 East Harwich - Larry Barry  
 5/26 49 Huntington - Mark Lynch, Sheila Carroll  
 5/27 8 W Hill Dam, Uxbridge - Tom & Cathy Dodd  
 5/31 10 MSSF, Plymouth - Michael Newton  
 5/31 30 Nasketucket Bay Reserve, Mattapoisett - Michael Newton  
 6/8 18 IRWS, Topsfield - Michael Newton  
 6/24 1 Holliston - Richard Hildreth  
 6/30 5 Georgetown - Matt Arey  
 7/4 42 C Franklin NABA - Mark Fairbrother *et al.*  
 7/5 21 S Berkshire NABA - Rene Wendell *et al.*  
 7/7 46 N Berkshire NABA - Tom Tynning *et al.*  
 7/13 21 C Berkshire NABA - Tom Tynning *et al.*  
 7/13 19 Blackstone Valley NABA - Tom Dodd *et al.*  
 7/19 14 Boston Nature Center - Lucy Merrill-Hills  
 7/21 94 Northampton NABA - Mark Fairbrother *et al.*  
 7/27 11 Brewster NABA - Joe Dwelley *et al.*  
 7/27 10 N Worcester NABA - Wendy Howes *et al.*  
 8/17 42 Otter River SF, Winchendon - Mark Lynch, Sheila Carroll  
 9/3 1 N Reading - Jennifer Mooney-Brown  
 9/10 7 Mt. Greylock SR, Lanesborough - Steve Moore *et al.*  
 10/13 3 Rough Meadows WS, Rowley - Matt Arey  
 10/19 2 Falmouth - Serge Matheny  
 10/20 1 Plum Island, Newbury - Lucy Merrill-Hills

### Common Buckeye

5/20 1 Fitch's Bridge Road, Groton - Tom Murray  
 5/21 1 Old County, W Tisbury - Matt Pelikan  
 5/26 1 Ware - Brian Klassanos  
 6/19 2 Oak St. PL, Shrewsbury - Bruce deGraaf  
 6/24 1 Holliston - Richard Hildreth  
 6/28 4 Borden Colony, Raynham - Joe Dwelley  
 7/6 4 McDonald Nature Preserve, Wilbraham - Bill Callahan  
 7/13 23 Blackstone Valley NABA - Tom Dodd *et al.*  
 7/14 3 LPWS, Barnstable - Joe Dwelley  
 7/20 5 Falmouth NABA - Joe Dwelley *et al.*  
 7/25 12 Shrewsbury - Bruce deGraaf

7/27 19 N Worcester NABA - Wendy Howes *et al.*  
 8/1 22 Oak St. PL, Shrewsbury - Bruce deGraaf  
 8/4 5 Grafton - Dolores Price, Martin St. Onge  
 8/6 12 Oak St. PL, Shrewsbury - Bruce deGraaf  
 8/14 2 Ward Res, Andover - Howard Hoople  
 8/20 25 Plum Island, Newbury - Matt Arey  
 8/22 20 Dartmouth - Brian Cassie  
 8/24 25 Bourne - Brian Cassie  
 8/29 60 Bachelor Brook/Stony Brook CA - Bill & Nancy Callahan  
 8/31 10 AP, Dartmouth - Lauren Miller-Donnelly *et al.*  
 9/1 8 Ipswich - Kessler, Kessler & Hoople  
 9/8 54 AP Allens Neck, Dartmouth - MBC Trip  
 9/9 6 NAC, Concord - Steve Moore, Garry Kessler  
 9/14 30 AP, Dartmouth - Matt Arey  
 9/17 56 Westport - Brian Cassie  
 9/24 50 Plum Island, Newbury - Matt Arey  
 9/27 98 Gooseberry Neck, Westport - Brian Cassie  
 9/29 1 New Salem - Bill Benner, Joe Wicinski  
 10/13 20 Plum Island, Newbury - Matt Arey  
 10/14 1 Rumnay Marsh, Saugus - Kirk Marshall  
 10/16 1 Mill Village Road, Deerfield - Wendy Howes  
 10/23 1 Deer Park Reserve, Hardwick - Wendy Howes  
 10/26 2 Newbury, Tendercrop Farm - Matt Arey

### White Admiral

6/7 1 Amherst - Josh Rose  
 7/4 2 C Franklin NABA - Mark Fairbrother *et al.*  
 7/7 23 N Berkshire NABA - Tom Tynning *et al.*  
 7/19 1 Windsor - Bill Callahan  
 8/4 1 Cummington - Henry Chinaski  
 8/13 1 Middleton - Kirk Marshall  
 9/9 1 Chicopee - Wioletta Rarog  
 9/21 2 North Adams, Mt. Greylock State Res. - Steve Moore *et al.*  
 9/23 1 Meadow Road, Montague - Mark Fairbrother

### Red-spotted Purple

5/9 1 Holliston - Richard Hildreth  
 6/1 2 Rutland - Dolores Price, Marvin St. Onge  
 6/8 2 Hinsdale - Mark Lynch, Sheila Carroll  
 6/15 16 Warwick - Mark Lynch, Sheila Carroll  
 6/28 57 Dubuque SF, Hawley - Mark Lynch, Sheila Carroll

7/4 17 C Franklin NABA - Mark Fairbrother *et al.*  
 7/5 6 S Berkshire NABA - Rene Wendell *et al.*  
 7/7 22 N Berkshire NABA - Tom Tynning *et al.*  
 7/13 8 C Berkshire NABA - Tom Tynning *et al.*  
 7/19 6 Monroe - Mark Lynch, Sheila Carroll  
 7/27 6 N Worcester NABA - Wendy Howes *et al.*  
 8/4 1 Grafton - Dolores Price, Martin St. Onge  
 8/12 2 Holliston - Richard Hildreth  
 8/23 12 Windsor - Bill Callahan  
 8/24 22 Sandisfield - Mark Lynch, Sheila Carroll  
 8/29 2 Arnold Arboretum, Boston - Lucy Merrill-Hills  
 9/10 7 Mt. Greylock SR, Lanesborough - Steve Moore *et al.*  
 9/21 1 Arnold Arboretum, Boston - Lucy Merrill-Hills  
 9/22 1 Mt. Greylock SR, Lanesborough - Bill Callahan  
 10/1 1 Northampton CG - Bill Callahan

**Viceroy**  
 6/1 1 Chelmsford PL - Tom Murray  
 6/7 3 BMB WS, Worcester - Mark Rosenstein  
 6/7 2 Oak St. PL, Shrewsbury - Bruce deGraaf  
 6/9 3 Gill - Bill & Nancy Callahan  
 6/12 4 MBWMA, Newbury - Marjorie Watson  
 6/23 3 Oak St. PL, Shrewsbury - Bruce deGraaf  
 7/7 3 N Berkshire NABA - Tom Tynning *et al.*  
 7/13 3 Blackstone Valley NABA - Tom Dodd *et al.*  
 7/21 27 Northampton NABA - Mark Fairbrother *et al.*  
 7/24 11 MBWMA, Newbury - Marjorie Watson  
 7/27 7 N Worcester NABA - Wendy Howes *et al.*  
 7/29 5 MBWMA, Newbury - Marjorie Watson  
 8/1 10 Oak St. PL, Shrewsbury - Bruce deGraaf  
 8/3 3 Crane WMA, Falmouth - Joe Dwelly  
 8/4 9 Grafton - Dolores Price, Martin St. Onge  
 8/4 11 Dunstable - Tom Murray  
 8/8 13 MBWMA, Newbury - Bo Zarembo  
 8/11 7 Grafton - Dolores Price, Martin St. Onge  
 8/20 3 Millenium Park, Roxbury - Lucy Merrill-Hills  
 8/24 3 Sweet al.ice CA, Amherst - Elise Barry  
 8/28 6 BMB WS, Worcester - MBC Trip  
 9/1 1 Huntington - Mark Lynch, Sheila Carroll  
 9/8 4 AP Allens Neck, Dartmouth - MBC Trip  
 9/9 6 Oak St. PL, Shrewsbury - Bruce deGraaf  
 9/21 1 Shelburne Falls - Jeff Boettner

9/27 3 FS WMA, Longmeadow - Bill Callahan  
 10/5 2 FS WMA, Longmeadow - Bill & Nancy Callahan  
 10/7 2 Sylvan Nursery, Dartmouth - Lauren Miller-Donnelly  
 10/14 1 WMWMA, New Braintree - Wendy Howes, Alan Rawle  
 10/26 1 Rough Meadows WS, Rowley - Matt Arey

### **Hackberry Emperor**

7/27 2 Bart's Cobble, Sheffield - MBC Trip  
 8/4 2 S Egremont, Egremont - Mark Lynch, Sheila Carroll  
 8/14 1 Forest Park, Springfield - Bill & Nancy Callahan  
 8/17 5 Forest Park, Springfield - MBC Trip  
 8/24 4 Northampton CG - Michael Newton

### **Tawny Emperor**

7/5 2 S Berkshire NABA - Rene Wendell *et al.*  
 7/13 1 Northfield - Melissa Morgan-Oakes  
 7/27 5 Bart's Cobble, Sheffield - MBC Trip  
 8/4 1 S Egremont, Egremont - Mark Lynch, Sheila Carroll  
 8/4 1 Bart's Cobble, Sheffield - Peter DeGennaro

### **Northern Pearly-Eye**

6/30 1 Georgetown - Matt Arey  
 7/2 1 Brockton - Dorene Austin  
 7/7 5 N Berkshire NABA - Tom Tynning *et al.*  
 7/12 2 Windsor - Bill Callahan  
 7/13 6 Tolland - Mark Lynch, Sheila Carroll  
 7/13 4 C Berkshire NABA - Tom Tynning *et al.*  
 7/16 2 Windsor - Bill Callahan  
 7/20 4 October Mountain SF, Washington - Bill & Nancy Callahan  
 7/21 1 Northampton NABA - Mark Fairbrother *et al.*  
 7/27 4 N Worcester NABA - Wendy Howes *et al.*  
 8/4 4 G45 Quabbin - Wendy Howes, Alan Rawle  
 8/24 3 Ware - MBC Trip

### **Eyed Brown**

7/4 9 C Franklin NABA - Mark Fairbrother *et al.*  
 7/13 5 Tolland - Mark Lynch, Sheila Carroll  
 7/13 7 C Berkshire NABA - Tom Tynning *et al.*  
 7/19 9 Windsor - Bill Callahan  
 7/20 2 October Mountain SF, Washington - Bill & Nancy Callahan  
 7/26 2 Ware River Watershed, Barre - Mark Lynch, Sheila Carroll  
 7/27 1 Norton - Brian Cassie  
 8/1 1 Bennett Meadow, Northfield - Bill Callahan

8/4 1 Windsor - Gagnon, Moore, Volkle

### **Appalachian Brown**

6/11 1 FS WMA, Longmeadow - Bill Callahan

6/19 4 FS WMA, Longmeadow - Bill Callahan

6/27 4 CST, Westborough - Steve Moore

7/4 8 C Franklin NABA - Mark Fairbrother  
*et al.*

7/5 6 S Berkshire NABA - Rene Wendell *et al.*

7/7 17 N Berkshire NABA - Tom Tynning *et al.*

7/13 16 Tolland - Mark Lynch, Sheila Carroll

7/14 17 Hardwick - Mark Lynch, Sheila  
Carroll

7/21 7 Northampton NABA - Mark Fairbrother  
*et al.*

7/27 6 N Worcester NABA - Wendy Howes  
*et al.*

8/4 1 G45 Quabbin - Wendy Howes, Alan  
Rawle

8/17 7 FS WMA, Longmeadow - MBC Trip

9/13 1 Hadley - John Lambdin

### **Little Wood-Satyr**

5/28 4 Oak St. PL, Shrewsbury - Bruce  
deGraaf

5/31 2 Nasketucket Bay Reserve, Mattapoisett  
- Michael Newton

6/1 40 HPM, Woburn - Matt Arey

6/4 11 Borden Colony, Raynham - Joe Dwelly

6/5 2 Springside Park, Pittsfield - Gael Hurley

6/7 20 BMB WS, Worcester - Mark  
Rosenstein

6/9 9 Maudslay SP, NP - Bo Zaremba

6/23 11 Thompson Fields, Harwich - Joe  
Dwelly

7/4 9 Lakeview-Morse CA, Sharon - Madeline  
Champagne

7/9 12 Arnold Arboretum, Boston - Lucy  
Merrill-Hills

7/10 22 Crowe's, Dennis - Joe Dwelly

7/13 45 Blackstone Valley NABA - Tom Dodd  
*et al.*

7/20 30 Rough Meadows WS, Rowley - Matt  
Arey

7/23 1 Salem - Steven Ross

7/24 3 Ware River Watershed, Barre - Wendy  
Howes

7/27 8 N Worcester NABA - Wendy Howes  
*et al.*

7/27 3 Bart's Cobble, Sheffield - MBC Trip

7/27 2 Brewster NABA - Joe Dwelly *et al.*

8/2 2 Boston Nature Center - Lucy  
Merrill-Hills

8/4 1 Grafton - Dolores Price, Martin St. Onge

8/4 1 G45 Quabbin - Wendy Howes, Alan  
Rawle

### **Common Ringlet**

5/12 1 Wellfleet Bay Ws, Wellfleet - Fred  
Bouchard

5/23 1 McDonald Nature Preserve, Wilbraham  
- Bill Callahan

5/26 20 Old Town Hill, Newbury - Matt Arey

5/31 12 Crane WMA, Falmouth - Joe Dwelly

5/31 14 Little Mount Tom, Holyoke - Bill  
Callahan

6/2 10 Lime Kiln, Sheffield - Bill & Nancy  
Callahan

6/2 35 Hennessey Property, Grafton - Dolores  
Price, Marvin St. Onge

6/7 25 McDonald Nature Preserve, Wilbraham  
- Bill Callahan

6/7 36 Hennessey Property, Grafton - MBC  
Trip

6/8 5 Windsor - Bill & Nancy Callahan

6/8 40 IRWS, Topsfield - Michael Newton

6/9 97 Maudslay SP, NP - Bo Zaremba

6/15 3 MHF, Sharon - Lucy Merrill-Hills

6/22 6 Lime Kiln, Sheffield - Bill & Nancy  
Callahan

7/7 14 N Berkshire NABA - Tom Tynning *et al.*

7/27 57 N Worcester NABA - Wendy Howes  
*et al.*

8/3 15 Crane WMA, Falmouth - Joe Dwelly

8/10 3 Lime Kiln, Sheffield - Wendy Howes,  
Alan Rawle

8/12 36 Maudslay SP, NP - Garry Kessler

8/16 14 Marston Mills Airport - Serge Matheny

8/24 3 Sandisfield - Mark Lynch, Sheila  
Carroll

8/30 5 Groton - Tom Murray

9/21 2 North Adams, Mt. Greylock State Res.  
- Steve Moore *et al.*

10/6 1 Whately - Josh Rose

10/13 3 Andover, Lightning Tree Reservation -  
Howard Hoople

### **Common Wood-Nymph**

7/7 2 N Berkshire NABA - Tom Tynning *et al.*

7/13 66 Blackstone Valley NABA - Tom Dodd  
*et al.*

7/19 11 Maudslay SP, NP - Bo Zaremba

7/20 28 Falmouth NABA - Joe Dwelly *et al.*

7/21 35 Northampton NABA - Mark  
Fairbrother *et al.*

7/25 18 High Ridge WMA, Westminster -  
Wendy Howes

7/27 108 N Worcester NABA - Wendy Howes  
*et al.*

7/27 32 Brewster NABA - Joe Dwelly *et al.*

7/29 17 Windsor - Bill Callahan

8/1 13 Oak St. PL, Shrewsbury - Bruce  
deGraaf

- 8/3 12 Hubbardston, Williamsville Road -  
MBC Trip
- 8/3 13 Crane WMA, Falmouth - Joe Dwelley
- 8/4 1 S Egremont, Egremont - Mark Lynch,  
Sheila Carroll
- 8/4 8 Windsor - Gagnon, Moore, Volkle
- 8/6 13 Oak St. PL, Shrewsbury - Bruce  
deGraaf
- 8/11 7 Grafton - Dolores Price, Martin St.  
Onge
- 8/15 7 Oak St. PL, Shrewsbury - Bruce  
deGraaf
- 8/24 3 Sandisfield - Mark Lynch, Sheila  
Carroll
- 8/26 1 Nasketucket Bay Reserve, Mattapoissett  
- Mark Rosenstein
- 8/30 3 Groton - Tom Murray
- 9/1 2 Plum Island, Newbury - Fred Bouchard
- 9/18 1 McDonald Nature Preserve, Wilbraham  
- Bill Callahan
- 9/26 1 BMB WS, Worcester - Garry Kessler
- Monarch**
- 5/6 1 Barnes Airport, Westfield - Bill Callahan
- 5/11 1 Plymouth - Ashley Bolbrock
- 5/18 1 Borden Colony, Raynham - Joe Dwelley
- 5/20 1 Turners Falls Airport - Josh Rose
- 5/23 1 Stichter Yard, Newbury - Sharon  
Stichter
- 5/26 1 NP - Bo Zaremba
- 5/26 1 Wareham - Andrew Griffith
- 5/31 3 Nasketucket Bay Reserve, Mattapoissett  
- Michael Newton
- 6/8 6 IRWS, Topsfield - Michael Newton
- 6/10 4 Millenium Park, Roxbury - Lucy  
Merrill-Hills
- 6/21 1 Norfolk - Michelle Noonan
- 6/28 1 Dubuque SF, Hawley - Mark Lynch,  
Sheila Carroll
- 6/30 5 Crane WMA, Falmouth - Joe Dwelley
- 7/4 41 C Franklin NABA - Mark Fairbrother  
*et al.*
- 7/5 15 S Berkshire NABA - Rene Wendell  
*et al.*
- 7/7 36 N Berkshire NABA - Tom Tynning *et al.*
- 7/9 12 Crane WMA, Falmouth - Joe Dwelley
- 7/12 1 Hardwick - Wendy Howes
- 7/13 49 C Berkshire NABA - Tom Tynning  
*et al.*
- 7/13 74 Blackstone Valley NABA - Tom Dodd  
*et al.*
- 7/14 37 LPWS, Barnstable - Joe Dwelley
- 7/15 1 Brockton - Kathleen Walker
- 7/15 9 W Meadows, Northampton - Bill  
Callahan
- 7/16 8 Woodsom Farm, Amesbury - Marjorie  
Watson
- 7/19 15 Norton - Brian Cassie
- 7/19 18 Monroe - Mark Lynch, Sheila Carroll
- 7/20 16 October Mountain SF, Washington -  
Bill & Nancy Callahan
- 7/20 57 Falmouth NABA - Joe Dwelley *et al.*
- 7/21 100 Plum Island, Newbury - Matt Arey
- 7/21 139 Northampton NABA - Mark  
Fairbrother *et al.*
- 7/24 12 Millenium Park, Roxbury - Lucy  
Merrill-Hills
- 7/25 52 High Ridge WMA, Westminster -  
Wendy Howes
- 7/27 82 Brewster NABA - Joe Dwelley *et al.*
- 7/27 222 N Worcester NABA - Wendy Howes  
*et al.*
- 7/27 14 Bart's Cobble, Sheffield - MBC Trip
- 7/28 10 Elm Hill, MAS, Brookfield - Wendy  
Howes, Alan Rawle
- 7/28 13 IRWS, Topsfield - Lucy Merrill-Hills
- 7/29 22 Windsor - Bill Callahan
- 8/1 13 MAS Visual Arts Center, Canton -  
Lucy Merrill-Hills
- 8/3 50 Crane WMA, Falmouth - Joe Dwelley
- 8/4 20 Medfield - Walt Webb
- 8/4 20 S Egremont, Egremont - Mark Lynch,  
Sheila Carroll
- 8/9 36 Westport - Mark Lynch, Sheila Carroll
- 8/10 12 Bart's Cobble, Sheffield - Wendy  
Howes, Alan Rawle
- 8/12 10 Maudslay SP, NP - Garry Kessler
- 8/16 14 Marston Mills Airport - Serge Matheny
- 8/18 10 Conte NWR, Hadley - Karl & Elise  
Barry
- 8/20 35 AP Allens Neck, Dartmouth - Steve  
Moore, Garry Kessler
- 8/24 20 Northampton CG - Michael Newton
- 8/24 14 Long Point, W Tisbury - Matt Pelikan
- 8/31 17 Sylvan Nursery, Dartmouth - Lauren  
Miller-Donnelly *et al.*
- 9/1 12 Huntington - Mark Lynch, Sheila  
Carroll
- 9/5 100 Williamstown - Bo Zaremba
- 9/8 90 SBSR - Lucy Merrill-Hills
- 9/8 55 Petersham - Mark Lynch, Sheila Carroll
- 9/9 12 Fitch's Bridge Road, Groton - Tom  
Murray
- 9/10 50 Northampton CG - Steve Moore *et al.*
- 9/13 1 Salem - Tricia Arrington
- 9/14 20 AP, Dartmouth - Matt Arey
- 9/15 100 Hadley - John Lambdin
- 9/17 405 SBSR - Lucy Merrill-Hills
- 9/20 18 Huntington - Mark Lynch, Sheila  
Carroll
- 9/22 40 Groton, Wallace Road - Tom Murray
- 9/22 30 Williamsburg Flower Hill Farm -  
Carol Duke

9/24 200 Plum Island, Newbury - Matt Arey  
 9/25 22 Groton, Wallace Road - Tom Murray  
 9/25 881 Westport - Brian Cassie  
 9/26 18 Holliston - Richard Hildreth  
 9/27 1600 Gooseberry Neck, Westport - Brian Cassie  
 9/28 150 Groton, Wallace Road - Tom Murray  
 9/28 500 Gooseberry Neck, Westport - Michael Newton  
 9/28 74 Millenium Park, Roxbury - Lucy Merrill-Hills  
 9/29 500 Newbury, Tendercrop Farm - Matt Arey  
 9/30 5 Arlington Heights - Lisa Wolfe  
 10/3 25 Gooseberry Neck, Westport - Doug Hlousek  
 10/13 100 Newbury, Tendercrop Farm - Matt Arey  
 10/14 1 Monroe - Mark Fairbrother  
 10/23 1 Plymouth - Robin Gross  
 10/24 11 Nahant Thicket - Linda Pivacek  
 10/26 1 Hardwick - Wendy Howes  
 10/30 3 Nahant Thicket - Linda Pivacek  
 11/2 1 Fairhaven - Mark Lynch, Sheila Carroll

**Silver-spotted Skipper**  
 5/25 1 Montague Plains - Bill & Nancy Callahan  
 5/26 1 Huntington - Mark Lynch, Sheila Carroll  
 6/1 1 HPM, Woburn - Matt Arey  
 6/12 9 FS WMA, Longmeadow - Bill Callahan  
 6/24 2 Holliston - Richard Hildreth  
 6/29 6 Gill - Bill & Nancy Callahan  
 7/4 47 C Franklin NABA - Mark Fairbrother *et al.*  
 7/5 22 S Berkshire NABA - Rene Wendell *et al.*  
 7/7 19 N Berkshire NABA - Tom Tynning *et al.*  
 7/9 1 Wellfleet - Sherri VandenAkker  
 7/13 5 C Berkshire NABA - Tom Tynning *et al.*  
 7/13 30 Blackstone Valley NABA - Tom Dodd *et al.*  
 7/19 13 Florence Community Gardens - Bill Callahan  
 7/21 39 Northampton NABA - Mark Fairbrother *et al.*  
 7/27 15 N Worcester NABA - Wendy Howes *et al.*  
 7/27 32 Bart's Cobble, Sheffield - MBC Trip  
 8/4 20 Northampton CG - Tom Gagnon, Steve Moore, Barbara Volkle  
 8/9 24 Northampton CG - Bill Callahan  
 8/18 50 Florence Community Gardens - Bill & Nancy Callahan  
 8/26 50 Northampton CG - Tom Gagnon  
 9/5 1 Hadley - John Lambdin

9/15 1 Hadley - Sarah Lambdin  
 9/27 14 Northampton CG - Bill Callahan  
 10/2 1 Shelburne Falls - Jeremy Coleman  
 10/5 1 West Whately - Bill Benner

**Long-tailed Skipper**  
 8/31 1 Marblehead - Karen Haley  
 9/13 1 Ellisville Harbor SP, Plymouth - Serge Matheny  
 9/15 1 Hull - Peter DeGennaro  
 9/16 1 Belmont - Fred Bouchard  
 9/25 1 Marblehead - Karen Haley  
 9/25 1 Westport - Brian Cassie  
 9/26 1 Easthampton - Bruce King  
 9/28 1 Groton, Wallace Road - Tom Murray  
 9/29 1 Newbury, Tendercrop Farm - Matt Arey  
 10/6 1 Newbury, Tendercrop Farm - Matt Arey  
 10/7 1 Sylvan Nursery, Dartmouth - Lauren Miller-Donnelly

**Hoary Edge**  
 6/9 1 Gill - Bill & Nancy Callahan  
 6/15 1 Ware - Brian Klassanos  
 6/23 1 Oak St. PL, Shrewsbury - Bruce deGraaf  
 6/23 1 BMB WS, Worcester - Bill & Nancy Callahan  
 6/24 8 Worcester - Garry Kessler  
 6/24 7 BMB WS, Worcester - Bruce deGraaf  
 6/28 2 BMB WS, Worcester - Steve Moore  
 7/4 5 C Franklin NABA - Mark Fairbrother *et al.*  
 7/8 9 BMB WS, Worcester - Garry Kessler

**Southern Cloudywing**  
 5/31 2 Crane WMA, Falmouth - Joe Dwelly  
 6/7 1 New Salem Community Gardens - Ron & Sue Cloutier  
 6/23 1 Thompson Fields, Harwich - Joe Dwelly  
 6/23 1 Oak St. PL, Shrewsbury - Bruce deGraaf  
 6/24 2 BMB WS, Worcester - Bruce deGraaf  
 6/26 2 HPM, Woburn - Steve Moore  
 6/30 1 Marston Mills Airport - Joe Dwelly  
 7/3 3 Belchertown - Ron & Sue Cloutier  
 7/4 2 C Franklin NABA - Mark Fairbrother *et al.*  
 7/6 2 McDonald Nature Preserve, Wilbraham - Bill Callahan  
 7/7 1 HPM, Woburn - Howard Hoople  
 7/9 3 Crane WMA, Falmouth - Joe Dwelly  
 7/14 2 McDonald Nature Preserve, Wilbraham - Bill & Cara Callahan

**Northern Cloudywing**  
 5/27 1 McDonald Nature Preserve, Wilbraham - Bill & Nancy Callahan  
 5/31 1 Old County, W Tisbury - Matt Pelikan  
 6/7 8 BMB WS, Worcester - Mark Rosenstein

6/7 12 McDonald Nature Preserve, Wilbraham  
- Bill Callahan  
6/9 2 Gill - Bill & Nancy Callahan  
6/15 8 BMB WS, Worcester - Michael Newton  
6/21 14 McDonald Nature Preserve,  
Wilbraham - Bill Callahan  
7/1 6 McDonald Nature Preserve, Wilbraham  
- Bill Callahan  
7/7 4 N Berkshire NABA - Tom Tynning *et al.*  
7/13 1 Blackstone Valley NABA - Tom Dodd  
*et al.*  
7/15 1 HPM, Woburn - Mark Rosenstein

### **Dreamy Duskywing**

5/21 1 MBWMA, Newbury - Marjorie Watson  
5/24 1 Pepperell - Tom Murray  
5/25 5 Otter River SF, Winchendon - Mark  
Lynch, Sheila Carroll  
5/26 1 Chelmsford - Tom Murray  
5/27 2 W Hill Dam, Uxbridge - Tom & Cathy  
Dodd  
5/31 3 MSSF, Plymouth - Michael Newton  
6/1 2 HPM, Woburn - Matt Arey  
6/1 2 MBWMA, Newbury - Matt Arey  
6/8 1 Moran WMA, Windsor - Bill & Nancy  
Callahan  
6/8 1 Windsor - Bill & Nancy Callahan  
6/15 1 BMB WS, Worcester - Michael Newton

### **Sleepy Duskywing**

4/29 1 MSSF, Plymouth - Steve Moore, Garry  
Kessler & Annie Reid  
5/4 1 MSSF, Plymouth - MBC Trip  
5/6 2 Correllus State Forest, West Tisbury -  
Matt Pelikan  
5/8 2 Crane WMA, Falmouth - Joe Dwelley  
5/16 4 MSSF, Plymouth - Steve Moore  
5/18 2 Montague Plains - Bill & Nancy  
Callahan  
5/22 1 MSSF, Plymouth - Garry Kessler  
5/27 2 Crane WMA, Falmouth - Joe Dwelley  
5/31 1 MSSF, Plymouth - Michael Newton

### **Juvenal's Duskywing**

4/13 1 MBWMA, Newbury - Joe Stichter  
5/6 5 Correllus State Forest, West Tisbury -  
Matt Pelikan  
5/8 20 Crane WMA, Falmouth - Joe Dwelley  
5/18 18 Montague Plains - Bill & Nancy  
Callahan  
5/22 1 MSSF, Plymouth - Garry Kessler  
5/31 1 Correllus State Forest, West Tisbury -  
Matt Pelikan  
5/31 10 MSSF, Plymouth - Michael Newton  
6/5 1 Boston Nature Center - Lucy  
Merrill-Hills  
6/9 4 Gill - Bill & Nancy Callahan  
6/15 2 Warwick - Mark Lynch, Sheila Carroll

6/29 1 Grafton - Price, Miller & St. Onge

### **Horace's Duskywing**

5/16 1 MSSF, Plymouth - Steve Moore  
7/13 1 East Wareham - Laura Sayward  
7/14 3 McDonald Nature Preserve, Wilbraham  
- Bill & Cara Callahan  
7/27 4 Brewster NABA - Joe Dwelley *et al.*  
8/6 2 Oak St. PL, Shrewsbury - Bruce deGraaf  
8/18 1 Cummington - Thomas Farrington  
9/5 2 Northampton CG - Garry Kessler  
9/23 1 Westport - Brian Cassie

### **Wild Indigo Duskywing**

5/11 1 Chelmsford PL - Tom Murray  
5/27 3 Lamson Rd, Foxborough - Brian Cassie  
5/27 1 Crane WMA, Falmouth - Joe Dwelley  
6/1 15 HPM, Woburn - Matt Arey  
6/7 1 West Whately - Bill Benner  
6/22 1 Great Barrington - Bill & Nancy  
Callahan  
7/13 7 Blackstone Valley NABA - Tom Dodd  
*et al.*  
7/21 18 Northampton NABA - Mark  
Fairbrother *et al.*  
7/25 10 Lamson Rd, Foxborough - Brian  
Cassie  
7/27 28 N Worcester NABA - Wendy Howes  
*et al.*  
8/1 16 Oak St. PL, Shrewsbury - Bruce  
deGraaf  
8/4 10 Northampton CG - Tom Gagnon,  
Steve Moore, Barbara Volkle  
8/9 3 MHF, Sharon - Lucy Merrill-Hills  
8/12 1 Brockton - Nicole Ribeiro  
8/24 1 Sandisfield - Mark Lynch, Sheila  
Carroll  
9/9 4 Northampton CG - Bill & Nancy  
Callahan  
9/22 3 Northampton CG - MBC Trip  
9/28 1 Groton, Wallace Road - Tom Murray  
10/13 1 Plum Island, Newbury - Matt Arey

### **Common Sootywing**

5/26 1 Holyoke - Bill Benner  
7/21 67 Northampton NABA - Mark  
Fairbrother *et al.*  
7/27 1 N Worcester NABA - Wendy Howes  
*et al.*  
7/28 5 Elm Hill, MAS, Brookfield - Wendy  
Howes, Alan Rawle  
8/10 1 Greenfield - Thurman Hart  
8/24 15 Northampton CG - Michael Newton  
8/26 6 Montague, Greenfield Road - Mark  
Fairbrother  
9/3 3 Boston Nature Center - Lucy  
Merrill-Hills  
9/10 1 Northampton CG - Steve Moore *et al.*

9/21 1 Plum Island, Newbury - Matt Arey

### **Arctic Skipper**

- 6/1 2 Moran WMA, Windsor - MBC Trip  
6/1 2 North Adams, Mt. Greylock State Res.  
- MBC Trip  
6/2 1 Hennessey Property, Grafton - Dolores  
Price, Marvin St. Onge  
6/5 3 Windsor - Gael Hurley  
6/8 2 Windsor - Bill & Nancy Callahan  
6/8 24 Moran WMA, Windsor - Bill & Nancy  
Callahan

### **Least Skipper**

- 5/24 1 Arnold Arboretum, Boston - Lucy  
Merrill-Hills  
6/9 2 Gill - Bill & Nancy Callahan  
6/12 8 FS WMA, Longmeadow - Bill Callahan  
6/15 1 MHF, Sharon - Lucy Merrill-Hills  
6/22 8 Great Barrington - Bill & Nancy  
Callahan  
6/28 6 Dubuque SF, Hawley - Mark Lynch,  
Sheila Carroll  
7/5 15 S Berkshire NABA - Rene Wendell  
*et al.*  
7/7 21 N Berkshire NABA - Tom Tynning *et al.*  
7/13 1 Blackstone Valley NABA - Tom Dodd  
*et al.*  
7/27 6 Brewster NABA - Joe Dwelly *et al.*  
8/3 20 Crane WMA, Falmouth - Joe Dwelly  
8/4 18 FS WMA, Longmeadow - Bill  
Callahan  
8/9 29 Westport - Mark Lynch, Sheila Carroll  
8/17 40 FS WMA, Longmeadow - MBC Trip  
8/20 15 Plum Island, Newbury - Matt Arey  
8/23 6 Arnold Arboretum, Boston - Lucy  
Merrill-Hills  
8/29 11 Bachelor Brook/Stony Brook CA -  
Bill & Nancy Callahan  
8/30 11 Groton - Tom Murray  
8/31 8 AP, Dartmouth - Lauren Miller-  
Donnelly *et al.*

- 9/8 38 FS WMA, Longmeadow - Bill &  
Nancy Callahan  
9/13 1 Fall River - Doug Hlousek  
9/16 3 Rock Meadow, Belmont - Fred  
Bouchard  
9/21 6 FS WMA, Longmeadow - Bill Callahan  
10/5 1 FS WMA, Longmeadow - Bill & Nancy  
Callahan  
10/13 2 MBWMA, Newbury - Matt Arey  
10/13 1 Arnold Arboretum, Boston - Lucy  
Merrill-Hills

### **European Skipper**

- 6/8 1 Northampton CG - Bill & Nancy  
Callahan  
6/17 1 Brockton - Kathleen Walker

- 6/21 48 McDonald Nature Preserve,  
Wilbraham - Bill Callahan  
6/23 36 Thompson Fields, Harwich - Joe  
Dwelly  
6/28 21 Borden Colony, Raynham - Joe  
Dwelly  
7/1 8 McDonald Nature Preserve, Wilbraham  
- Bill Callahan  
7/7 1394 N Berkshire NABA - Tom Tynning  
*et al.*  
7/13 58 C Berkshire NABA - Tom Tynning  
*et al.*  
7/16 8 Windsor - Bill Callahan  
7/20 2 Rough Meadows WS, Rowley - Matt  
Arey  
7/27 1 N Worcester NABA - Wendy Howes  
*et al.*  
**Fiery Skipper**  
7/4 1 C Franklin NABA - Mark Fairbrother  
*et al.*  
9/1 1 Ipswich - Kessler, Kessler & Hoople  
9/9 1 Northampton CG - Tom Gagnon  
9/9 1 Sylvan Nursery, Dartmouth - Mark  
Rosenstein  
9/13 1 Pittsfield - Gael Hurley  
9/21 2 Plum Island, Newbury - Matt Arey  
9/22 4 Northampton CG - MBC Trip  
9/24 20 Plum Island, Newbury - Matt Arey  
9/29 10 Newbury, Tendercrop Farm - Matt  
Arey  
10/13 1 Plum Island, Newbury - Matt Arey  
10/26 1 Newbury, Tendercrop Farm - Matt Arey

### **Leonard's Skipper**

- 8/24 1 Crane WMA, Falmouth - Joe Dwelly  
8/26 1 BMB WS, Worcester - Steve Moore  
8/28 4 BMB WS, Worcester - MBC Trip  
8/31 2 BMB WS, Worcester - MBC Trip  
9/20 1 Huntington - Mark Lynch, Sheila  
Carroll

### **Cobweb Skipper**

- 5/21 4 Old County, W Tisbury - Matt Pelikan  
5/25 7 Otter River SF, Winchendon - Mark  
Lynch, Sheila Carroll  
5/25 8 Montague Plains - Bill & Nancy  
Callahan  
5/31 1 Old County, W Tisbury - Matt Pelikan

### **Indian Skipper**

- 5/26 1 Florence - Tom Gagnon  
5/31 16 MSSF, Plymouth - Michael Newton  
6/1 5 HPM, Woburn - Matt Arey  
6/1 12 Florence - Bill & Nancy Callahan  
6/1 4 Florence - MBC Trip  
6/3 1 Surrenden Farm, Groton - Tom Murray  
6/5 2 Springside Park, Pittsfield - Gael Hurley  
6/5 1 Franklin - Keith Shaw



6/9 3 Maudslay SP, NP - Bo Zaremba  
6/19 2 Oak St. PL, Shrewsbury - Bruce  
deGraaf  
6/28 1 Dubuque SF, Hawley - Mark Lynch,  
Sheila Carroll  
9/21 1 FS WMA, Longmeadow - Bill Callahan

### **Peck's Skipper**

5/25 1 Sharon Community Garden - Madeline  
Champagne  
5/26 1 Chelmsford - Tom Murray  
5/29 1 FS WMA, Longmeadow - Bill Callahan  
5/31 8 Oak St. PL, Shrewsbury - Bruce  
deGraaf  
6/2 2 Lime Kiln, Sheffield - Bill & Nancy  
Callahan  
6/9 28 Gill - Bill & Nancy Callahan  
6/19 5 Oak St. PL, Shrewsbury - Bruce  
deGraaf  
6/22 3 Great Barrington - Bill & Nancy  
Callahan  
7/4 14 C Franklin NABA - Mark Fairbrother  
*et al.*  
7/5 11 S Berkshire NABA - Rene Wendell  
*et al.*  
7/7 32 N Berkshire NABA - Tom Tynning *et al.*  
7/13 9 C Berkshire NABA - Tom Tynning *et al.*  
7/20 14 October Mountain SF, Washington -  
Bill & Nancy Callahan  
8/2 12 Belmont - Fred Bouchard  
8/6 15 Oak St. PL, Shrewsbury - Bruce  
deGraaf  
8/11 21 Grafton - Dolores Price, Martin  
St. Onge  
8/12 6 Arnold Arboretum, Boston - Lucy  
Merrill-Hills  
8/18 10 Florence Community Gardens - Bill &  
Nancy Callahan  
8/22 9 BMB WS, Worcester - Steve Moore  
8/24 3 Holliston - Richard Hildreth  
8/30 15 Groton - Tom Murray  
8/31 8 BMB WS, Worcester - MBC Trip  
9/5 2 Belmont - Fred Bouchard  
9/9 1 Chicopee - Wioletta Rarog  
9/19 7 AP Field Station, Dartmouth - Steve  
Moore *et al.*  
9/28 1 AP Field Station, Dartmouth - Michael  
Newton  
10/5 1 FS WMA, Longmeadow - Bill & Nancy  
Callahan  
10/6 3 Newbury, Tendercrop Farm - Matt Arey  
10/18 1 Hardwick - Wendy Howes

### **Tawny-edged Skipper**

5/21 1 Fountain Park, Wilbraham - Bill  
Callahan  
5/26 1 Oak St. PL, Shrewsbury - Bruce  
deGraaf

5/31 1 Correllus State Forest, West Tisbury -  
Matt Pelikan  
6/4 7 Wilbraham Middle School grounds -  
Bill Callahan  
6/9 42 Maudslay SP, NP - Bo Zaremba  
6/12 2 Millenium Park, Roxbury - Lucy  
Merrill-Hills  
6/23 5 Thompson Fields, Harwich - Joe Dwelley  
7/4 4 C Franklin NABA - Mark Fairbrother  
*et al.*  
7/5 1 S Berkshire NABA - Rene Wendell *et al.*  
7/27 1 Bart's Cobble, Sheffield - MBC Trip  
8/8 6 Holliston - Richard Hildreth  
8/10 2 Bart's Cobble, Sheffield - Wendy  
Howes, Alan Rawle  
8/19 5 Gill - Bill Callahan  
8/24 20 Northampton CG - Michael Newton  
8/31 5 Sylvan Nursery, Dartmouth - Lauren  
Miller-Donnelly *et al.*  
9/9 2 Fitch's Bridge Road, Groton - Tom  
Murray  
9/14 2 AP, Dartmouth - Matt Arey  
9/27 1 Northampton CG - Bill Callahan

### **Crossline Skipper**

7/4 4 C Franklin NABA - Mark Fairbrother  
*et al.*  
7/5 2 S Berkshire NABA - Rene Wendell *et al.*  
7/9 2 Crane WMA, Falmouth - Joe Dwelley  
7/20 1 Falmouth NABA - Joe Dwelley *et al.*  
7/27 1 Bart's Cobble, Sheffield - MBC Trip  
7/27 2 N Worcester NABA - Wendy Howes  
*et al.*  
7/27 1 Norton - Brian Cassie  
8/9 1 Holliston - Richard Hildreth  
8/16 1 Marston Mills Airport - Serge Matheny  
8/18 1 Holliston - Richard Hildreth

### **Long Dash**

6/2 1 Hennessey Property, Grafton - Dolores  
Price, Marvin St. Onge  
6/7 2 BMB WS, Worcester - Mark Rosenstein  
6/7 12 Hennessey Property, Grafton - MBC  
Trip  
6/9 30 Gill - Bill & Nancy Callahan  
6/9 76 Maudslay SP, NP - Bo Zaremba  
6/15 5 Petersham - Bill & Nancy Callahan  
6/23 21 Thompson Fields, Harwich - Joe  
Dwelley  
7/5 5 S Berkshire NABA - Rene Wendell *et al.*  
7/7 22 N Berkshire NABA - Tom Tynning *et al.*  
7/13 1 C Berkshire NABA - Tom Tynning *et al.*  
7/19 1 Monroe - Mark Lynch, Sheila Carroll  
8/30 1 Groton - Tom Murray

### **Northern Broken-Dash**

7/2 2 FS WMA, Longmeadow - Bill Callahan

7/5 13 S Berkshire NABA - Rene Wendell  
*et al.*  
 7/9 5 Crane WMA, Falmouth - Joe Dwelley  
 7/13 8 Blackstone Valley NABA - Tom Dodd  
*et al.*  
 7/13 7 C Berkshire NABA - Tom Tynning *et al.*  
 7/19 14 West Whately - Bill Benner  
 7/21 22 Northampton NABA - Mark  
 Fairbrother *et al.*  
 7/27 44 Brewster NABA - Joe Dwelley *et al.*  
 7/27 12 N Worcester NABA - Wendy Howes  
*et al.*  
 8/2 4 Boston Nature Center - Lucy  
 Merrill-Hills  
 8/4 1 Northampton CG - Tom Gagnon, Steve  
 Moore, Barbara Volkle  
 8/11 1 Belchertown - Karl & Elise Barry  
 8/24 4 East Harwich - Mark Faherty  
 9/1 1 Yarmouth - Joe Dwelley

### **Little Glassywing**

6/22 1 Lime Kiln, Sheffield - Bill & Nancy  
 Callahan  
 6/26 1 HPM, Woburn - Mark Rosenstein  
 7/1 14 McDonald Nature Preserve, Wilbraham  
 - Bill Callahan  
 7/4 9 C Franklin NABA - Mark Fairbrother  
*et al.*  
 7/5 19 S Berkshire NABA - Rene Wendell  
*et al.*  
 7/11 1 Wareham - Andrew Griffith  
 7/13 1 Blackstone Valley NABA - Tom Dodd  
*et al.*  
 7/16 1 Breakneck Hill Conservation Land,  
 Southborough - Dawn Vesey  
 7/19 2 Maudslay SP, NP - Bo Zaremba  
 7/24 1 Cummington - Thomas Farrington  
 7/29 2 Windsor - Bill Callahan  
 8/4 1 Cummington - Henry Chinaski  
 8/12 1 Maudslay SP, NP - Garry Kessler  
 8/24 1 Holliston - Richard Hildreth  
 8/25 1 Moose Brook Preserve, Hardwick -  
 Wendy Howes, Alan Rawle

### **Sachem**

7/25 1 Lamson Rd, Foxborough - Brian Cassie  
 7/27 1 Norton - Brian Cassie  
 9/13 2 Sylvan Nursery, Dartmouth - Lauren  
 Miller-Donnelly  
 9/14 12 AP, Dartmouth - Matt Arey  
 9/19 2 Sylvan Nursery, Dartmouth - Steve  
 Moore *et al.*  
 9/21 1 Plum Island, Newbury - Matt Arey  
 9/24 3 Plum Island, Newbury - Matt Arey  
 9/28 2 Sylvan Nursery, Dartmouth - Michael  
 Newton  
 9/28 2 AP Field Station, Dartmouth - Michael  
 Newton

9/29 1 Newbury - Matt Arey  
 10/7 1 Helfand Community Gardens,  
 Dartmouth - Lauren Miller-Donnelly  
 10/13 1 Newbury, Tendercrop Farm - Matt Arey

### **Delaware Skipper**

7/4 15 C Franklin NABA - Mark Fairbrother  
*et al.*  
 7/5 3 S Berkshire NABA - Rene Wendell *et al.*  
 7/8 5 BMB WS, Worcester - Garry Kessler  
 7/12 2 Hardwick - Wendy Howes  
 7/13 18 Blackstone Valley NABA - Tom Dodd  
*et al.*  
 7/20 3 Berkshire County - Peter DeGennaro  
 7/20 2 October Mountain SF, Washington -  
 Bill & Nancy Callahan  
 7/20 2 Falmouth NABA - Joe Dwelley *et al.*  
 7/21 1 Northampton NABA - Mark Fairbrother  
*et al.*  
 7/26 1 W Hill Dam, Uxbridge - Garry & Annie  
 Kessler  
 7/29 1 Windsor - Bill Callahan  
 8/4 1 Wareham - Andrew Griffith

### **Mulberry Wing**

7/8 1 McDonald Nature Preserve, Wilbraham  
 - Bill Callahan  
 7/10 2 CST, Northborough - MBC Trip  
 7/10 1 CST, Westborough - MBC Trip  
 7/13 12 Blackstone Valley NABA - Tom Dodd  
*et al.*  
 7/14 4 CST, Northborough - MBC Trip  
 7/14 4 McDonald Nature Preserve, Wilbraham  
 - Bill & Cara Callahan  
 7/20 4 October Mountain SF, Washington -  
 Bill & Nancy Callahan  
 7/20 3 Berkshire County - Peter DeGennaro  
 7/21 4 Northampton NABA - Mark Fairbrother  
*et al.*  
 7/27 3 N Worcester NABA - Wendy Howes  
*et al.*  
 8/1 4 Ware River Watershed, Barre - Mark  
 Lynch, Sheila Carroll  
 8/4 6 S Egremont, Egremont - Mark Lynch,  
 Sheila Carroll

### **Hobomok Skipper**

5/25 1 Fall River - Doug Hlousek  
 5/27 1 Holliston - Richard Hildreth  
 6/1 8 Sheffield - Bill Benner  
 6/1 2 HPM, Woburn - Matt Arey  
 6/3 1 Moore SP, Paxton - Kristin Steinmetz  
 6/8 5 Holliston - Richard Hildreth  
 6/8 1 Hinsdale - Mark Lynch, Sheila Carroll  
 6/9 2 Maudslay SP, NP - Bo Zaremba  
 6/17 1 Prospect Park, Shrewsbury - Bruce  
 deGraaf  
 6/28 1 BMB WS, Worcester - Steve Moore

7/5 4 S Berkshire NABA - Rene Wendell *et al.*  
7/7 9 N Berkshire NABA - Tom Tynning *et al.*  
7/9 1 Holliston - Richard Hildreth  
7/12 1 Gill - Bill Callahan  
8/4 1 Grafton - Dolores Price, Martin St. Onge  
9/8 1 Petersham - Mark Lynch, Sheila Carroll

### **Zabulon Skipper**

6/1 1 MBWMA, Newbury - Matt Arey  
6/3 2 FS WMA, Longmeadow - Bill Callahan  
6/8 4 Burma Road, Milton - Lucy  
Merrill-Hills  
6/17 4 FS WMA, Longmeadow - Bill Callahan  
6/28 1 Borden Colony, Raynham - Joe Dwelly  
6/29 1 Ware - Bill & Nancy Callahan  
8/3 3 FS WMA, Longmeadow - Bill & Nancy  
Callahan  
8/4 1 W Bridgewater - Sally Golder Clark  
8/17 22 Nasketucket Bay Reserve,  
Mattapoisett - MBC Trip  
8/17 11 FS WMA, Longmeadow - MBC Trip  
8/24 5 Northampton CG - Michael Newton  
8/29 4 Arnold Arboretum, Boston - Lucy  
Merrill-Hills  
9/1 6 Northampton CG - MBC Trip  
9/8 8 AP Allens Neck, Dartmouth - MBC Trip  
9/22 3 Northampton CG - MBC Trip  
9/27 1 Meadow Road, Montague - Mark  
Fairbrother  
9/29 1 West Whately - Bill Benner, Joe  
Wicinski

### **Broad-winged Skipper**

7/10 2 CST, Northborough - MBC Trip  
7/16 17 Johnny Appleseed Park, Springfield -  
Bill Callahan  
7/21 1 Wareham - Andrew Griffith  
7/27 17 Brewster NABA - Joe Dwelly *et al.*  
7/28 17 Norton - Brian Cassie  
8/1 1 Burma Road, Milton - Madeline  
Champagne  
8/4 1 FS WMA, Longmeadow - Bill Callahan  
8/4 4 Great Barrington - Mark Lynch, Sheila  
Carroll  
8/20 2 Plum Island, Newbury - Matt Arey  
9/14 1 AP, Dartmouth - Matt Arey

### **Dion Skipper**

7/7 1 N Berkshire NABA - Tom Tynning *et al.*  
7/10 1 Florence - Tom Gagnon  
7/10 1 Hampshire County - Bill Callahan  
7/10 1 Athol - Ron & Sue Cloutier  
7/19 1 Fitzgerald Lake, Florence - Bill  
Callahan

### **Black Dash**

7/2 2 FS WMA, Longmeadow - Bill Callahan  
7/6 9 McDonald Nature Preserve, Wilbraham  
- Bill Callahan

7/8 2 McDonald Nature Preserve, Wilbraham  
- Bill Callahan  
7/13 6 Blackstone Valley NABA - Tom Dodd  
*et al.*  
7/14 27 McDonald Nature Preserve, Wilbra-  
ham - Bill & Cara Callahan  
7/14 1 MBWMA, Newbury - Marjorie Watson  
7/14 1 CST, Northborough - MBC Trip  
7/20 1 Rough Meadows WS, Rowley - Matt  
Arey  
7/21 7 Northampton NABA - Mark Fairbrother  
*et al.*

### **Two-spotted Skipper**

7/4 1 C Franklin NABA - Mark Fairbrother  
*et al.*  
7/20 1 October Mountain SF, Washington -  
Bill & Nancy Callahan  
7/20 1 Berkshire County - Peter DeGennaro

### **Dun Skipper**

6/24 1 BMB WS, Worcester - Bruce deGraaf  
7/5 11 S Berkshire NABA - Rene Wendell  
*et al.*  
7/7 11 N Berkshire NABA - Tom Tynning *et al.*  
7/8 17 BMB WS, Worcester - Garry Kessler  
7/13 21 Blackstone Valley NABA - Tom Dodd  
*et al.*  
7/13 17 C Berkshire NABA - Tom Tynning  
*et al.*  
7/13 18 Tolland - Mark Lynch, Sheila Carroll  
7/17 1 Holliston - Richard Hildreth  
7/20 30 Berkshire County - Peter DeGennaro  
7/20 11 October Mountain SF, Washington -  
Bill & Nancy Callahan  
7/21 26 Northampton NABA - Mark  
Fairbrother *et al.*  
7/27 16 N Worcester NABA - Wendy Howes  
*et al.*  
7/27 40 Brewster NABA - Joe Dwelly *et al.*  
8/1 12 Ware River Watershed, Barre - Mark  
Lynch, Sheila Carroll  
8/8 7 MBWMA, Newbury - Bo Zaremba  
8/11 1 Holliston - Richard Hildreth  
8/31 4 Sylvan Nursery, Dartmouth - Lauren  
Miller-Donnelly *et al.*  
9/15 1 Hennessey Property, Grafton - Dolores  
Price, Martin St. Onge  
9/19 1 Sylvan Nursery, Dartmouth - Steve  
Moore *et al.*

### **Dusted Skipper**

5/25 1 Sherborn - Michael Newton  
5/27 11 Lamson Rd, Foxborough - Brian  
Cassie  
5/31 3 MSSF, Plymouth - Michael Newton  
5/31 2 Old County, W Tisbury - Matt Pelikan

5/31 4 Little Mount Tom, Holyoke - Bill Callahan  
 6/1 3 HPM, Woburn - Matt Arey  
 6/4 6 Borden Colony, Raynham - Joe Dwelly  
 6/7 11 Lamson Rd, Foxborough - Madeline Champagne  
 6/9 5 Shrewsbury High School - Bruce deGraaf  
 6/12 2 Sharon - Madeline Champagne  
 6/14 1 Worcester - Garry Kessler  
**Pepper and Salt Skipper**  
 6/4 1 Borden Colony, Raynham - Joe Dwelly  
 6/7 1 New Salem - Sue Cloutier  
 6/7 1 BMB WS, Worcester - Mark Rosenstein  
 6/8 3 Windsor - Bill & Nancy Callahan  
 6/9 1 NCM, Petersham - Bill & Nancy Callahan  
 7/7 1 N Berkshire NABA - Tom Tynning *et al.*

**Ocola Skipper**  
 8/17 1 Northampton CG - Tom Gagnon *et al.*  
 8/25 1 Northampton CG - Tom Gagnon  
 8/29 1 Holyoke - Ted Gilliland

9/1 1 Yarmouth - Joe Dwelly  
 9/7 1 Northampton CG - Bill & Nancy Callahan  
 9/8 1 Fitch's Bridge Road, Groton - Tom Murray  
 9/9 1 East Harwich - Mark Faherty  
 9/19 1 Plymouth - Robin Gross  
 9/23 1 Northampton CG - Ron & Sue Cloutier  
 9/24 3 Plum Island, Newbury - Matt Arey  
 9/25 1 Hardwick - Wendy Howes  
 9/25 2 Groton, Wallace Road - Tom Murray  
 9/25 2 Westport - Brian Cassie  
 9/28 1 AP Field Station, Dartmouth - Michael Newton  
 9/28 2 Northampton CG - Ted Gilliland  
 9/28 1 Essex County - Matt Arey  
 9/29 1 West Whately - Bill Benner, Joe Wicinski  
 9/29 1 Newbury, Tendercrop Farm - Matt Arey  
 9/29 1 Arlington Heights - Lisa Wolfe  
 10/5 1 FS WMA, Longmeadow - Bill & Nancy Callahan



Silver-spotted Skipper caterpillar (*Epargyreus clarus*) on American Wisteria (*Wisteria frutescens*), 9/15/19, Whately, MA, Bill Benner

Baltimore Checkerspot (*Euphydryas phaeton*), 7/4/19, Deerfield, MA, Alan Rawle



## 2019 Donor-Volunteers

Monetary and in-kind contributions include donating money; donating goods to be sold, auctioned, or used for the club's benefit; donating the cost of a good or service; other donations.

Volunteer Services include leading field trips or counts; working for Barbara J. Walker Butterfly Festival; manning the MBC table at Mass Land Conservation Conference or other events; helping set up and clean up at the Pot Lucks; running the MBC Monarch Guardian Program; leading walks for, or speaking to, trusts or other organizations; conducting butterfly institutes; leading and participating in the Hessel's Hairstreak Project, contributing articles and photos to the club journal; working toward the establishment of a state butterfly; serving on Nominating Committee, other services. Apologies to anyone we inadvertently missed.

### Monetary and In-Kind Contributions

Cheryl Adams

Don Adams

Harvey Allen

Theresa Armata

Elise Barry

Karl Barry

Bill Benner

Jeff Boettner

Cynthia Boettner

Jeanne Boudreau

Colin Browning

Paula Chasan

Kim Deandrade

Carol Duke

Jonathan Gottsche

Linda Graetz

Larry Jones

Annie Reid Kessler

Garry Kessler

Elizabeth Klisiewicz

Martha Gach

Tom Gagnon

Lauren Griffith

Pamela Hart

Howard Hoople

Wendy Howes

Renee LaFontaine

Stuart Litoff

Keith Marcotte

Virginia Marcotte

Lucy Merrill-Hills

Wendy Miller

Frank Model

Steve Moore

Rosemary Mosco

Shelley Parker

Dolores Price

Mark Rosenstein

Donna Schilling

Marvin St. Onge

Dawn Vesey

Barbara Volkle

Dick Walton

Marjorie Watson

Joe Wicinski

Hugh Willoughby

Nan Wilson

Bo Zaremba

## Volunteer Services

Elise Barry  
Karl Barry  
Bill Benner  
Kyle Bradford  
Bill Callahan  
Nancy Callahan  
Brian Cassie  
Rick Cech  
Madeline Champagne  
Ron Cloutier  
Sue Cloutier  
Bruce DeGraaf  
Danielle Desmarais  
Cathy Dodd  
Tom Dodd  
Nick Dorian  
Joe Dwelly  
Mark Faherty  
Mark Fairbrother  
Martha Gach  
Tom Gagnon  
Ted Gilliland  
Jonathon Glover  
Linda Graetz  
Dave Grant  
Ron Hamburger  
Richard Hildreth  
Howard Hoople  
Joey Hoople  
Russ Hopping  
Wendy Howes

Annie Reid Kessler  
Garry Kessler  
Brian Klassanos  
Joyce Lak  
Mark Mello  
Lucy Merrill-Hills  
Wendy Miller  
Lauren Miller-Donnelly  
Frank Model  
Steve Moore  
Rosemary Mosco  
Michael Newton  
Karen Parker  
Matt Pelikan  
Dolores Price  
Alan Rawle  
Julie Richberg  
Mark Rosenstein  
Donna Schilling  
Dave Small  
Shelley Small  
Tom Tynning  
Rebecca Vasa  
Dawn Vesey  
Barbara Volkle  
Dick Walton  
Marjorie Watson  
Pam Weatherbee  
Walt Webb  
Rene Wendell  
Tom Whelan  
Joe Wicinski  
Bo Zaremba



## Submission of Articles, Illustrations, and Season Records

We encourage all members to contribute to *Massachusetts Butterflies*. Articles, illustrations, photographs, butterfly field trip reports, garden reports, and book reviews are all welcome, and should be sent to the Editor by August 31 for the Fall issue, and January 31 for the Spring issue.

Send NABA Fourth of July count results to Tom Gagnon at: [tombwhawk@aol.com](mailto:tombwhawk@aol.com), by **August 15** for inclusion in the Fall issue. Send your season sightings and records to Mark Fairbrother at: [mark@massbutterflies.org](mailto:mark@massbutterflies.org), by **December 15** (or earlier if possible!) for inclusion in the Spring issue. Records may now be submitted via the online checklist and reporting form, which is available for download from our website at: <http://www.massbutterflies.org/club-publications.asp>

## Contributions

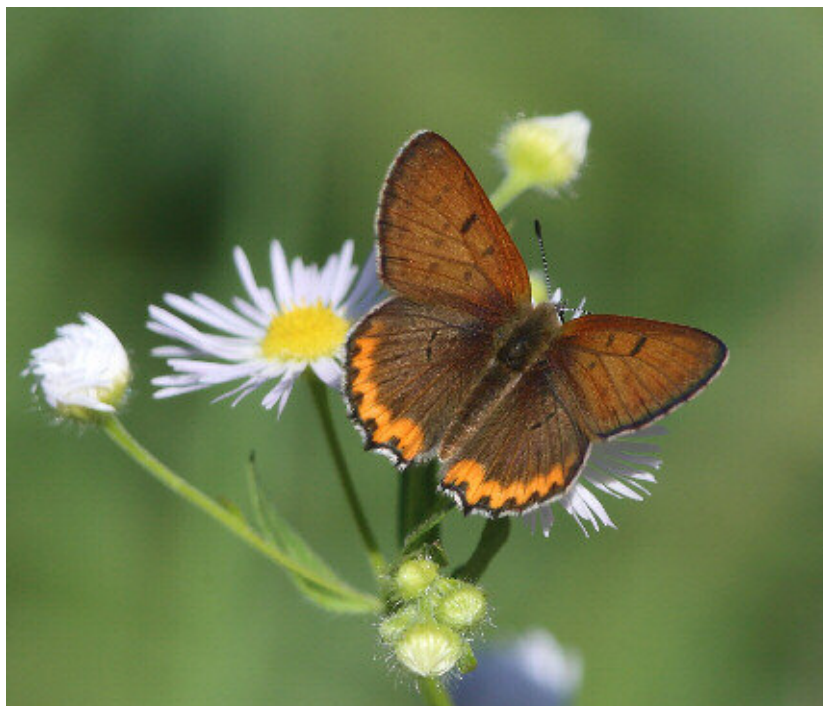
As a chapter of the North American Butterfly Association, the Massachusetts Butterfly Club is a non-profit, tax-exempt organization under section 501(c)(3) of the Internal Revenue Code. Gifts (in excess of dues) to the Massachusetts Butterfly Club are gifts to NABA, and are fully tax deductible.

## *Massachusetts Butterflies* Advisory Board

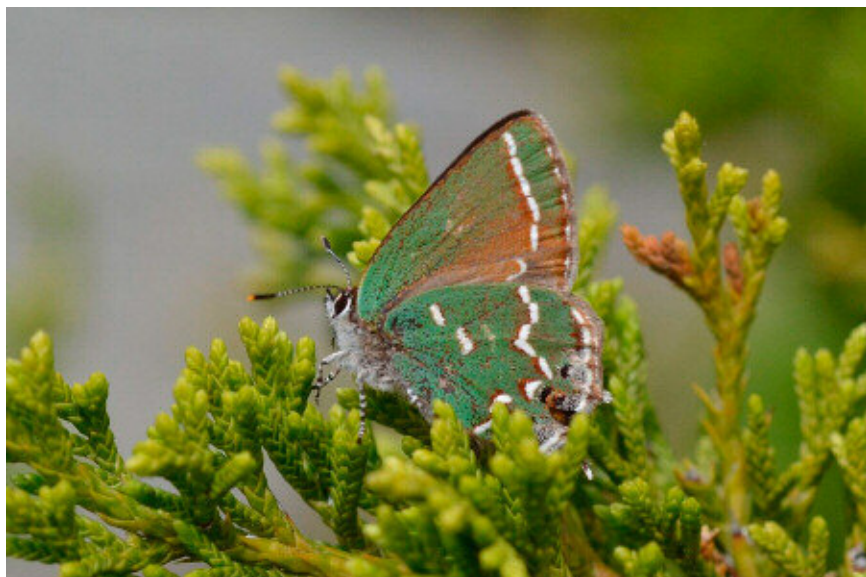
Brian Cassie, Foxboro, MA  
Madeline Champagne, Foxboro, MA  
Mark Fairbrother, Montague, MA  
Richard Hildreth, Holliston, MA  
Carl Kamp, Royalston, MA  
Matt Pelikan, Oak Bluffs, MA

*Massachusetts Butterflies* has been published continuously since 1993. Previous issues are viewable at <http://www.massbutterflies.org/club-publications.asp> after a one-year time lag. Print copies may be ordered for \$7 each, if still available. Send a check made out to "NABA-Massachusetts Butterfly Club" to our secretary, Barbara Volke, at the address on the inside front cover.





Bronze Copper male (*Lycaena hyllus*),  
9/25/19, Groton, MA, Tom Murray



Juniper Hairstreak (*Callophrys gryneus*),  
5/25/19, Woburn, MA, Howard Hoople